

GRILLES WITH SQUARE MESH FOR COUNTERCEILINGS

CF-UQ
SERIES

OVERVIEW TECHNICAL CHARACTERISTICS

OVERVIEW

The CF-UQ series of egg crate diffusers have been specifically designed to be used within modular ceilings and have a particular thin frame that once installed becomes invisible. This specific geometry allows to obtain very high values of free space for the air flow therefore reducing the air flow losses almost to a minimum.

The CF-UQ egg crate diffusers are available in two versions:

A versions with a straight mesh for a vertical through used in air extraction.

A versions with an angled mesh with for a 45° air flow. This version obstructs the view to the inside of the plenum box once the diffuser is installed in the modular ceiling.

Both versions can be integrated with flat filter class G3 6mm thick fixed to the grid with a special kit

TECHNICAL CHARACTERISTICS

Aluminium press-bent frame, 10mm wide.

Egg crate mesh with 13mm pitch

Version with an angled mesh with for a 45° air RAL 9010 paint finish

ACCESSORIES

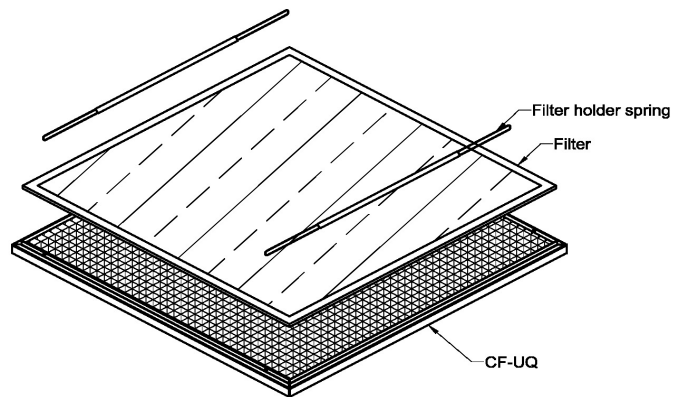
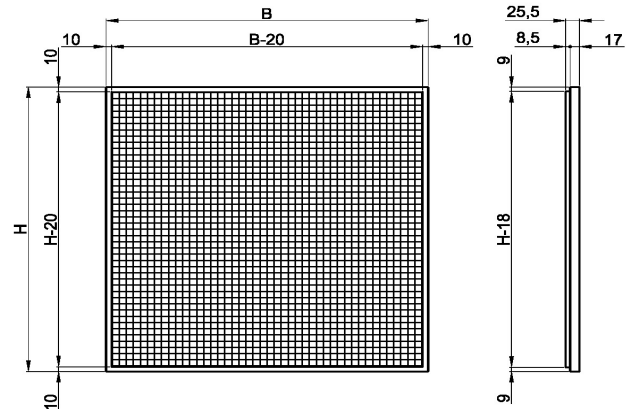
The diffuser can be fitted with with:

6mm thick flat filter with kit of two springs for fixing the filter to the grid;

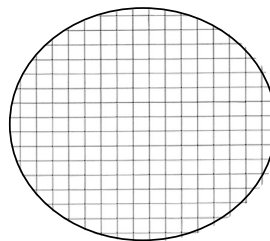
Steel plenum with or without insulation suitable for the diffuser without filter as for the diffuser with filter.

UNSUITABLE ENVIRONMENTS

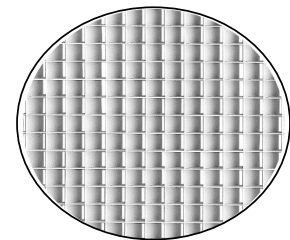
The aluminum products are not suitable for installation in environments with an atmosphere containing corrosive substances for this material and in particular containing chlorine, such as swimming pools, spas and some types of food industries.



Filter holder kit

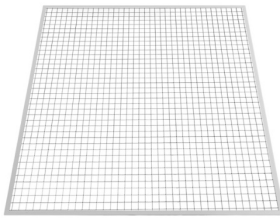


CF-UQ0R
vertical mesh



CF-UQ4R
angled mesh

nominal size	B (mm)	H (mm)	Size of the filter (optional) (mm)	Filter class EN 779
595 x 595	595	595	572x572x6	G3

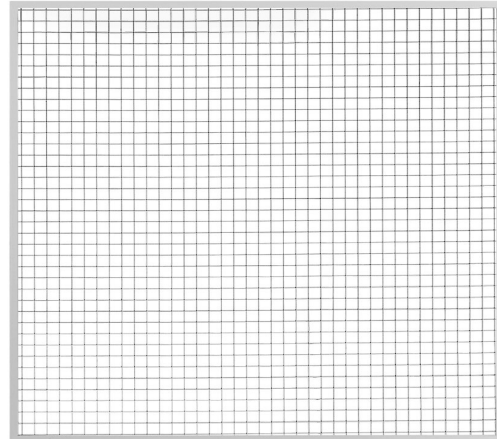


GRILLES WITH SQUARE MESH FOR COUNTERCEILINGS

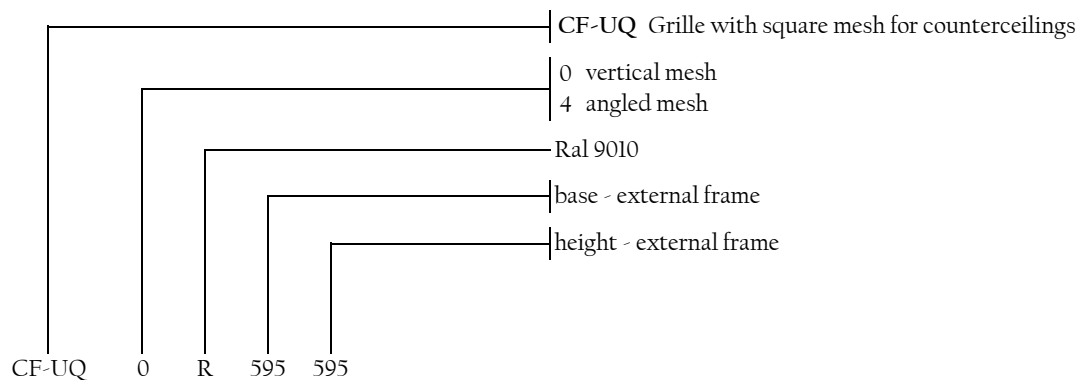
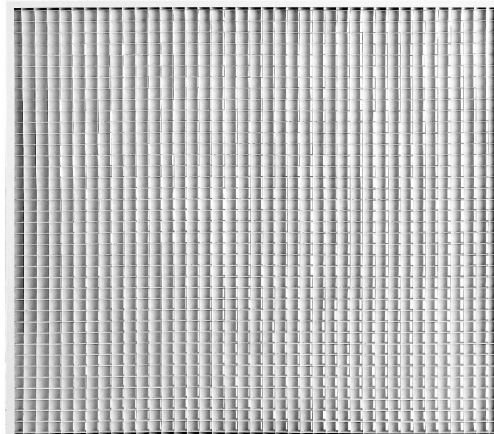
CF-UQ
SERIES

OVERVIEW TECHNICAL CHARACTERISTICS

CF-UQ 595X595 VERTICAL MESH			
AIR FLOW (m ³ /h)	ΔPs (Pa) diffuser	ΔPs (Pa) with filter	Lw dB(A)
500	0,6	2,2	<20
550	0,7	2,6	<20
650	1,0	3,6	<20
800	1,4	5,5	<20
1100	2,7	10,4	<20
1500	5,1	19,4	21
2200	10,9	41,7	29
2500	14,1	53,8	31
3000	20,3	77,5	35



CF-UQ 595X595 ANGLED MESH			
AIR FLOW (m ³ /h)	ΔPs (Pa) diffuser	ΔPs (Pa) with filter	Lw dB(A)
500	1,0	2,6	<20
550	1,2	3,1	<20
650	1,6	4,3	<20
800	2,5	6,6	<20
1100	4,7	12,4	<20
1500	8,8	23,1	25
2200	18,8	49,6	31
2500	24,3	64,1	33
3000	35,0	92,2	36



Accessories

CF-UQ-KIT Kit for fixing the filter
FP6572572 G3 class filter 572x572x6 for grille 595x595

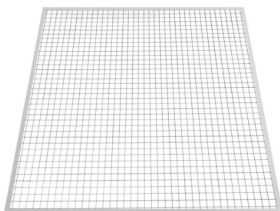
Note:

A grille with filter is composed by:

- grille
- filter
- fixing kit

to be ordered separately

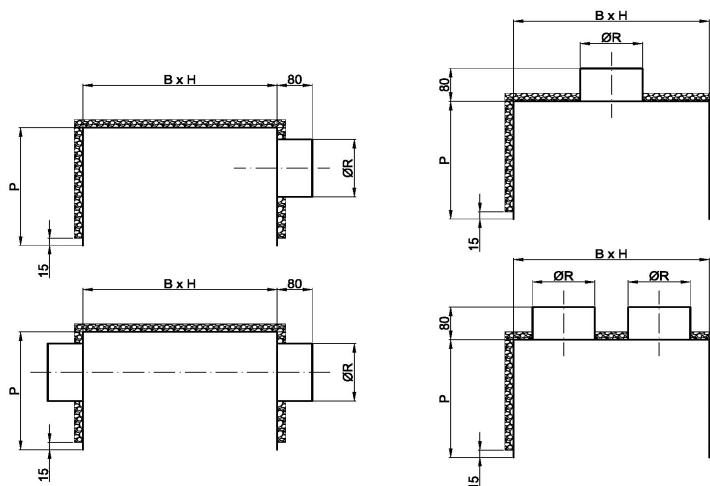
The fixing kit is the same for all the sizes of grille



GRILLES WITH SQUARE MESH FOR COUNTERCEILINGS

CF-UQ
SERIES

PLENUM



PP90 lateral connection

CF-UQ	maximum air flow m ³ /h	B mm	H mm	P mm	ØR mm	number of connections	Material of the connections
595x595	1500	581	581	400	300	1	Steel
595x595	3000	581	581	400	300	2	Steel

PP91 rear connection

CF-UQ	maximum air flow m ³ /h	B mm	H mm	P mm	ØR mm	number of connections	Material of the connections
595x595	1500	581	581	400	300	1	Steel
595x595	3000	581	581	400	400	1	Steel

