



CONTROL DAMPERS

SC SERIES

OVERVIEW TECHNICAL CHARACTERISTICS

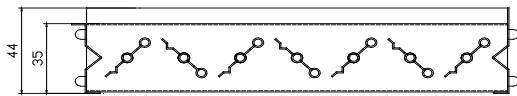
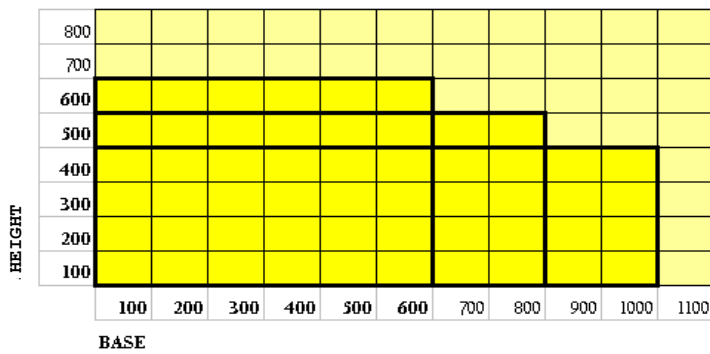
OVERVIEW AND CHARACTERISTICS :

The contrast control dampers of SC series can be fitted to UF KG UM UR GI KN e CR-KN series . They are held in place by special patented clips, designed both for fitting the damper to the grill and for fitting it on a false frame.

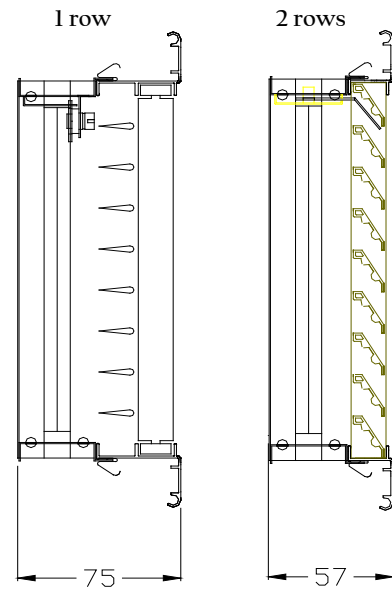
The SC series dampers are made entirely of galvanised steel and have a mechanism for moving and closing all the blades simultaneously.

This mechanism is a simple longitudinal plate that links all the blades, and can be removed by unscrewing a nut using a screwdriver. The careful design, precise assembly, and the quality of the materials used, make this an economical, practical, and efficient component.

Contrast control damper- dimensions that can be created in a single solution



Contrast control damper - overall dimensions



Contrast control damper -detail of patented fixing clips

