



IVY
BEYOND VMC

DAHLIA

YOUR PERSONAL AND EFFICIENT FANCOIL

MP3
Protect People, with Passione



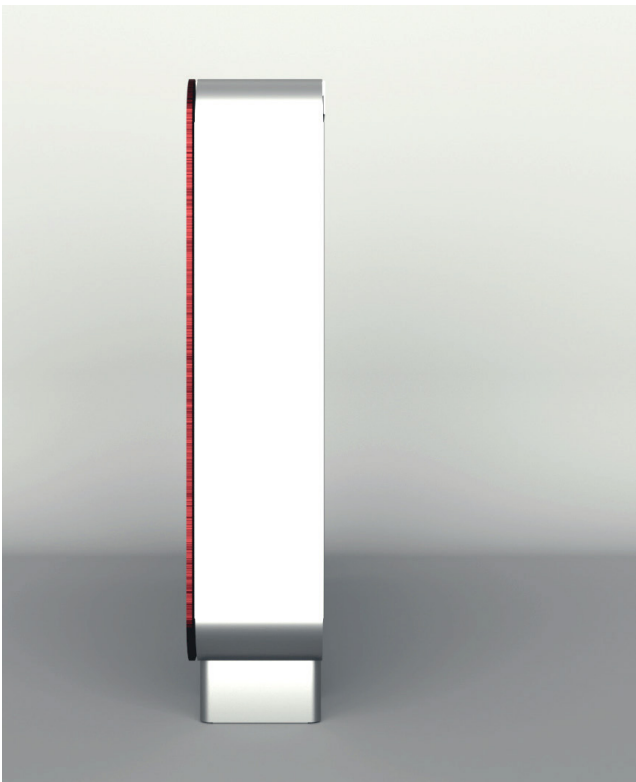
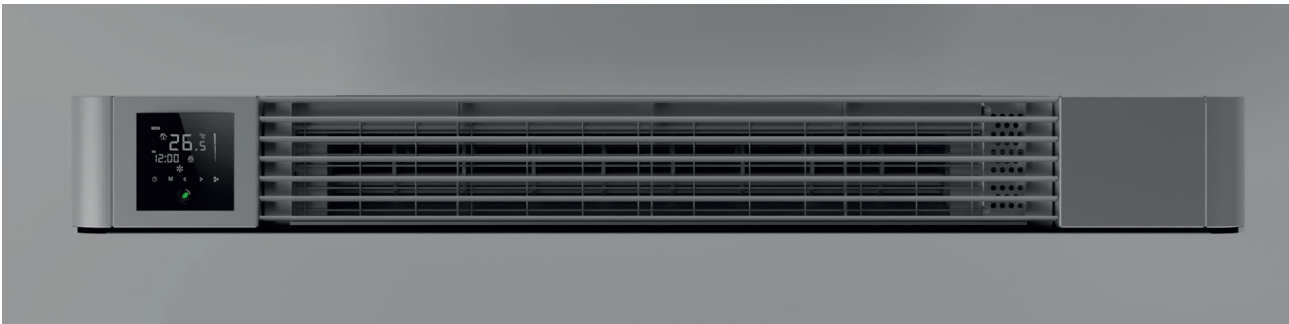
12 cm: The thinnest Fan Coil

The Dahlia model range has the distinction of being the thinnest fancoil on the market.

With its real 12 cm, over its entire height it is 10% thinner than its competitors in the slim segment.

A feature that distinguishes the machine is the absence of front suction grills, thanks to the innovative ventilation system that improves battery performance by working at negative pressure.

Dahlia: a real revolution in the field of fan coils, not in words but in deeds.



NEED VMC?
You can use IVY



_AIR EXCHANGE

_AIR TREATMENT

_ONE SINGLE UNIT

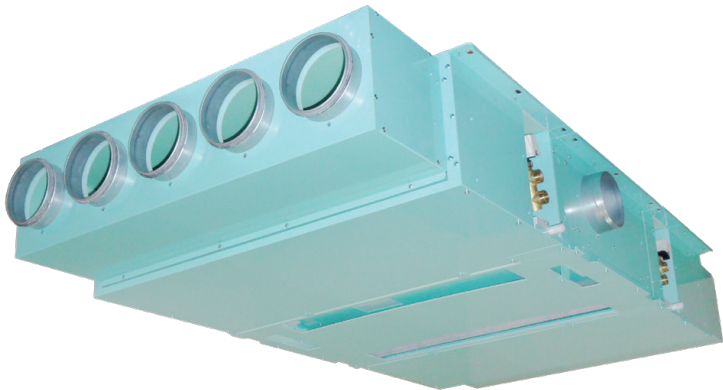
_ADVANCED ROOM CONTROL

_HIGHLY EFFICIENT

_EASY INSTALLATION

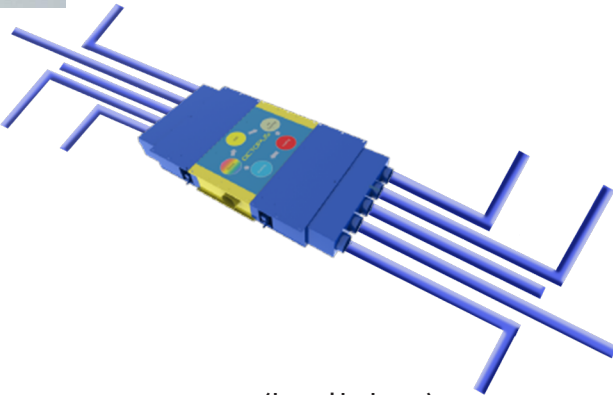
_NO THOUGHTS

_SILENT



IVY 10 dual zone

zone 1 (i.e. sleeping room)



zone 2 (i.e. living)

4 Range: Max flexibility

Features in common to all the models:

- Super thin thickness, only 12cm
- Minimum silence below the threshold audible, 20 dB (A)
- DC Inverter technology
- Low power consumption, only 4 Watts
- Modern design
- Crystal glass front panel hardened



HW

The Dahlia HW model was created for wall installation (High Wall).

- Pleated stainless steel filters a unlimited duration
- Tangential fan in aluminum for onegreater efficiency
- Remote and wall-mounted controls
- Detects and displays the ambient temperature



BT

The Dahlia BT model is designed for bathrooms but it is suitable also for the installation behind the door.

- 200 watt radiant panel as standard
- Pleated stainless steel filters a unlimited duration
- Tangential fan in aluminum for one greater efficiency
- Controls with remote control and convenient display



FS

Dahlia FS is designed for maximum flexibility of installation.

- _Floor standing or horizontal ceiling,
- _right or left attacks in one product,
- _maximum reversibility
- Double glass front and rear a request
- Radiant panel on request
- Pleated stainless steel filters an unlimited duration
- Tangential fan in aluminum for one greater efficiency
- Controls on the machine or on the wall
- Connections left and right on the same product



SM

Dahlia SM, has a low height allows placement in any position.

- _Right or left attacks in one product,
- _maximum reversibility.
- Radiant panel on request
- Pleated stainless steel filters an unlimited duration
- Tangential fan in aluminum for one greater efficiency
- Controls on the machine or on the wall
- Connections left and right on the same product
- Double customizable panel

Customizable panles

The frontal panel of every Dahlia model is completely customizable with monocromatic coating or applied graphics.

This feature makes the fancoil adaptable to any setting.



HW: High Wall

- Three sizes 400-600-800
- Width: from 873 to 1257 mm;
Height: 383 mm for all the sizes
- 2 and 4 pipe installation
- 2 and 3-way by-pass valves
- Light and full in customization based on customers' requests.
- Easy installation and maintenance
- Wi-fi controls for easy smartphone management
- Double flap for accurate control of the air direction
- Eight speed programs
- Modular thermal power
- Cooling function
- Heating function
- Dehumidification function
- Purification function
- Adjustable thermal power from 0.5 to 4 Kw



TOP controls, with black touch screen display and Wi-fi function for easy smartphone management via App.

The entire Dahlia range is easy to manage thanks to the controls touch screen and convenient App.

It is possible to manage a network of machines both domestic and for hotels, offices and public buildings.

The App is available for both iOS and Android systems

FS: Floor Standing

- Four sizes 200-400-600-800
- Width: from 681 to 1257 mm;
Height: 553 mm for all the sizes
- 2 and 4 pipe installation
- 2 and 3-way by-pass valves
- Light and full in customization according to customers' requests
- Easy installation and maintenance
- Wi-fi controls for easy smartphone management via convenient App
- Adjustable extruded aluminum air outlet grilles
- Eight speed programs
- Modular thermal power for each individual size
- Cooling function
- Heating function
- Dehumidification function
- Purification function
- Thermal power sizes from 0.5 to 4.7Kw



TOP controls, with black touch screen display and Wi-fi function for easy smartphone management via App.

The entire Dahlia range is easy to manage thanks to the controls touch screen and convenient App.

It is possible to manage a network of machines both domestic and for hotels, offices and public buildings.

The App is available for both iOS and Android systems

SM: Low profile

- Four sizes 200-400-600-800
 - Width: from 681 to 1257 mm;
Height: 553 mm for all the sizes
 - 2 and 4 pipe installation
 - 2 and 3-way by-pass valves
 - Light and full in customization according to customers' requests
 - Easy installation and maintenance
 - Wi-fi controls for easy smartphone management
- Adjustable extruded aluminum air outlet grilles
 - Eight speed programs
 - Modular thermal power
 - Cooling function
 - Heating function
 - Dehumidification function
 - Purification function
 - Adjustable thermal power from 0.5 to 3.6 Kw



TOP controls, with black touch screen display and Wi-fi function for easy smartphone management via App.

The entire Dahlia range is easy to manage thanks to the controls touch screen and convenient App.

It is possible to manage a network of machines both domestic and for hotels, offices and public buildings.

The App is available for both iOS and Android systems

BT: Bathroom

- One size fits all
 - Width: 565 mm;
Height: 1100 mm
 - 2-pipe installation
 - 2 and 3-way by-pass valves
 - Light and full customization according to customers' requests
 - Easy installation and maintenance
 - Can be installed behind normal doors
 - Wi-fi controls for easy management from smartphone
- Air outlet grilles in aluminum extruded orientable
 - Eight speed programs
 - Modular thermal power through the various configurations of fan speed
 - Cooling function
 - Heating function
 - Dehumidification function
 - Purification function
 - Thermal power 1.65 Kw



TOP controls, with black touch screen display and Wi-fi function for easy smartphone management via App.

The entire Dahlia range is easy to manage thanks to the controls touch screen and convenient App.

It is possible to manage a network of machines both domestic and for hotels, offices and public buildings.

The App is available for both iOS and Android systems

Technical data

HW

MODEL	U.M.	HW400	HW600	HW800
Total cooling capacity	KW	1.20	1.70	2.45
Thermal power	KW	1.68	2.45	3.30
Air flow (min-max)	m3/h	155-315	240-450	310-540
Electric power (min-max)	watt	4-11	5-14	8-17
Minimum sound pressure (SPL)	db(A)	23,0	23,4	25,0
Width	mm	873	1065	1257
Height	mm	383	383	383
Depth	mm	122	122	122
Low power DC Inverter motor		si	si	si
Tangential fan in aluminium		si	si	si
Remote controller		si	si	si
Display LCD		si	si	si
Pleated stainless steel filter		si	si	si
Front panel in tempered glass		si	si	si
Machine structure in powder-coated steel		si	si	si
Power supply voltage	V-HZ	220-50	220-50	220-50

SM

MODEL	U.M.	SM200	SM400	SM600	SM800
Total cooling capacity	KW	0,58	1,10	1,67	2,39
Thermal power	KW	0,84	1,62	2,41	3,30
Air flow (min-max)	m3/h	75-170	150-305	230-430	300-520
Electric power (min-max)	watt	3-12	4-13	5-14	8-17
Minimum sound pressure (SPL)	db(A)	20,6	22	23,6	20,8
Width	mm	681	873	1065	1257
Height	mm	383	383	383	383
Depth	mm	122	122	122	122
Low power DC Inverter motor		si	si	si	si
Tangential fan in aluminium		si	si	si	si
Remote controller		no	no	no	no
Display LCD		no	no	no	no
Pleated stainless steel filter		si	si	si	si
Front panel in tempered glass		si	si	si	si
Machine structure in powder-coated steel		si	si	si	si
Power supply voltage	V-HZ	220-50	220-50	220-50	220-50

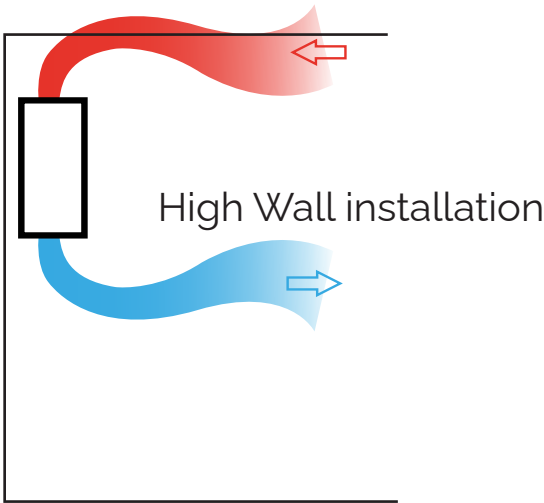
FS

MODEL	U.M.	FS200	FS400	FS600	FS800
Total cooling capacity	KW	0,88	1,81	2,7	3,38
Thermal power	KW	1,10	2,40	3,20	4,23
Air flow (min-max)	m3/h	80-180	155-315	240-450	310-540
Electric power (min-max)	watt	3-12	4-13	5-14	8-17
Minimum sound pressure (SPL)	db(A)	20,5	21,6	23,5	21,7
Width	mm	681	873	1065	1257
Height	mm	553	553	553	553
Depth	mm	122	122	122	122
Low power DC Inverter motor		si	si	si	si
Tangential fan in aluminium		si	si	si	si
Remote controller		no	no	no	no
Display LCD		si	si	si	si
Pleated stainless steel filter		si	si	si	si
Front panel in tempered glass		si	si	si	si
Machine structure in powder-coated steel		si	si	si	si
Power supply voltage	V-HZ	220-50	220-50	220-50	220-50

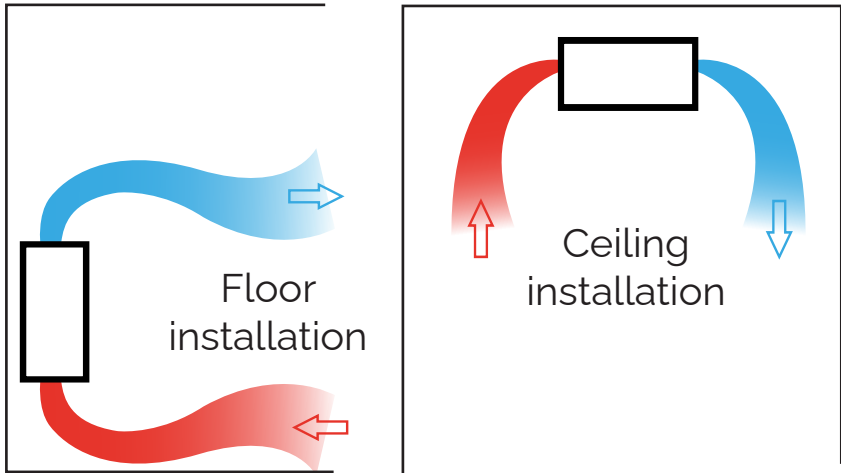
BT

MODEL	U.M.	BT400
Total cooling capacity	KW	1,20
Thermal power	KW	1,45
Air flow (min-max)	m3/h	120-225
Electric power (min-max)	watt	4-11
Minimum sound pressure (SPL)	db(A)	19,1
Width	mm	565
Height	mm	1100
Depth	mm	122
Low power DC Inverter motor		si
Tangential fan in aluminium		si
Remote controller		si
Display LCD		si
Pleated stainless steel filter		si
Front panel in tempered glass		si
Machine structure in powder-coated steel		si
Power supply voltage	V-HZ	220-50

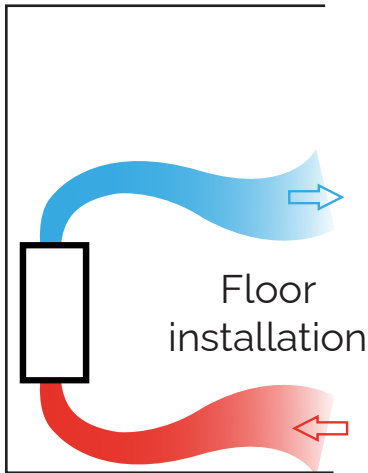
HW: High Wall



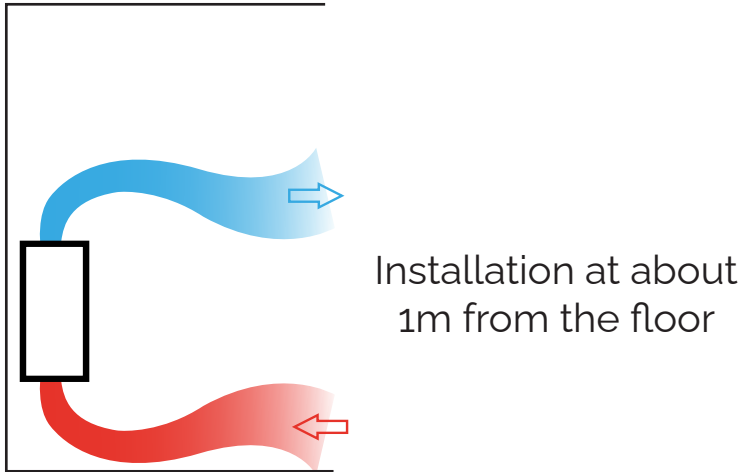
FS: Floor Standing



SM: Low Profile



SM: Low Profile





IVY
BEYOND VMC

DAHLIA

CUSTOMIZABLE AND EFFICIENT FANCOIL