

MFP3

Protect People, with Passione

PRESENTS



IVY

BEYOND VMC



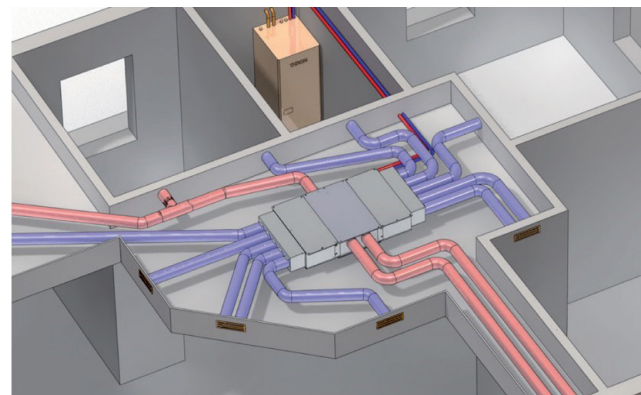


The IVY is a compact energy saving air handling unit, that allows you to heat, condition, dehumidify and exchange the air of a whole house.

EASY AND QUICK INSTALLATION: all pipes one size.

- 2 standard size air diffuser in various shape (and infinite customized solution)
- Only one size of pipe and up to 6 mt length with minimal pressure drop.
- One simple and technologic wall mounting control available with a remote panel and wi fi management.

_IVY is the slimmest heat recovery with the higher air treatment performances in the market.



_Only 240 mm thickness and up to 10.5 KW cooling/heating capacity (Eurovent standard).

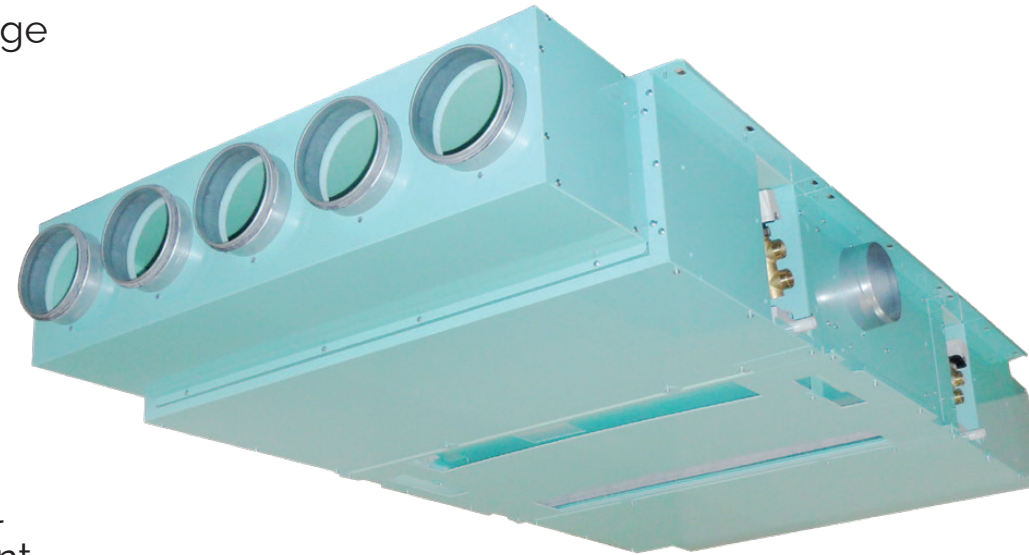
_It is connectable to all the boiler and heat pump on the market, single point or centralized

_The system is managed directly by the two easy and user-friendly zone controls

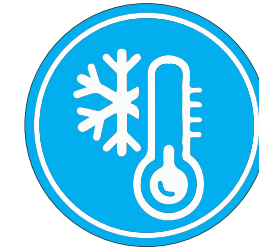
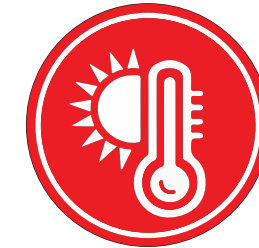
_IVY guarantee ultra-quiet operation due to the strict attention design to acoustic features, insulation and technological solutions, electronic motors fans, noise reduction pipes and grills.



System



IVY System offers you the best comfort thanks to its 3 integrated solutions:



_IVY System is a designed system for domestic and light commercial applications.

_The complete system proposes all the necessary components to complete the climate plant with an easy and quick installation operations

_One size water flexible ducts connections for intake and extraction of the air.

_The system is entirely installed in the false ceiling, delighting the most demanding architects and occupying small spaces thanks to the thickness of only 24 cm.

_IVY does not need dedicate projects of complex duct in false ceiling, no complicated installations and expensive constructions.

_The system includes easy connection flex tubular ducts from the main unit to the various rooms.

_The duct system is antibacterial certified, sanitized, insulated, anti-condensation, anti-mold and anti-noise with very low pressure drop thanks to smooth profile inside.



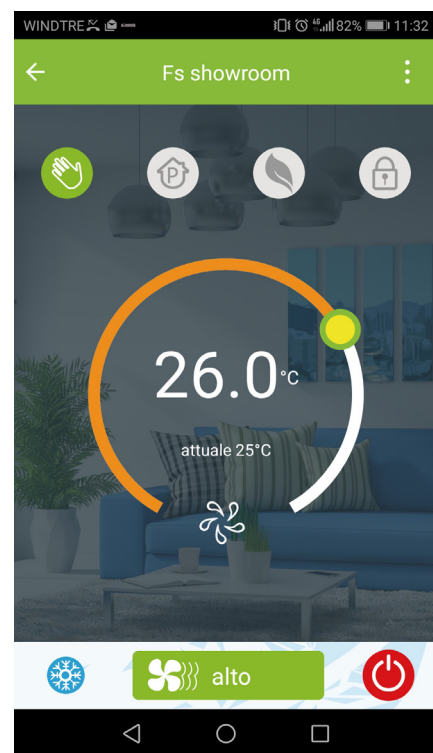
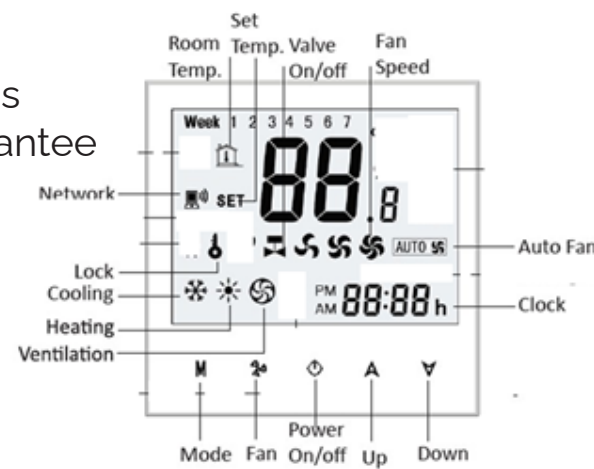
Dual Zone

_IVY has an exclusive easy and intuitive Dual Zone control: a double digital thermostat with all the functions simply indicated to manage the Day & Night zone independently.

_It also offers the possibility to connect with WIFI and to control the well-being temperature even when you are not at home

_The system manages two different temperatures in the Day and Night area independently, to guarantee the maximum comfort.

_Moreover is possible to activate only one zone to save energy




_For iOS, search for "My BecaSmart" in the Apple Store and download it. Alternatively, scan the QR code.

_ For Android, search for "My BecaSmart" in Google Play and download it. Alternatively, scan the QR code.

_ Make sure your smartphone is connected to WiFi.

_ Open the App, make the registration.

_ On the thermostat off, press and hold the down arrow for 8 seconds. The icon  will start blinking.

On the app press + to add the thermostat. The app will connect automatically.

Energy saving



_The heat recovery solution allows to recover the energy of the return air fresh from the rooms and heating/cooling the new air.

This is a great economic benefit and the ideal solution for a high level of energy efficiency.

_The double control of air inlet/outlet air temperature allow to exclude the air treatment and heat recovery device if the external temperature and internal set temperature are very close (automatic free cooling).



The duct

Flexible duct made with exclusive technology.

Piping made with:

- Polyolefin resin film with additive with anti-bacterial and anti-mold
- There is no need to design the duct work
- Low pressure drops thanks to the anti-turbulence circular section and the smooth internal profile
- Antibacterial and anti-mold treatment
- No external condensation even with low air temperatures
- Quick and easy to install
- Cost-saving solution in both purchase and installation
- Excellent dimensional resistance
- Thermal insulating coating in cross-linked polyethylene and closed cell expanded polyethylene
- External protection film of polyolefin resins with additives
- Built-in harmonic steel spiral
- The assembly of materials for the purpose of building the flexible duct does not require the use of chemical agents, adhesives or glues.
- Internal diameter of the duct 125 mm
- Light gray color
- Pack with 10 linear meters of hose
- Operating temperature - 40 ° C / + 100 ° C
- Minimum average radius of curvature 150 mm
- Reaction to Fire:

Class 1 (DM 26/6/84)

Class M1

EN class B-s1, do (13823: 2010)



ANTI BACTERIA SURFACE TREATMENT

The grilles

All accessories useful for installation are supplied.
MP3 manufactures several models and versions of grilles and diffusers.

For IVY we propose as standard solution the following items:

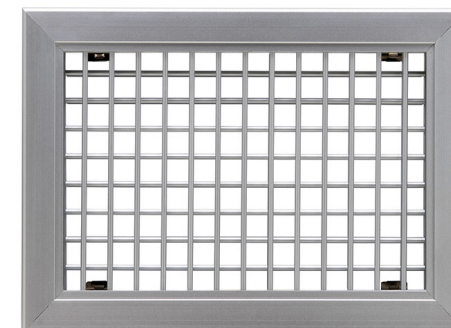
UF1 GRILL

- _Available for the diffusion/extract:
- _For the diffusion we propose as standard size the UF1 400 150
- _Air intake can be positioned under/near the main unit with a grill UFO 800x200 available with or without frame and optional basic air filter.
- _The simple and nice design is very appreciated by architects and it is perfect for a modern or minimal furniture set room.
- _Front line of fins is fix and it is possible to have a second vertical line of adjustable fins (left or right).
- _A supplementary damper can be inserted for more defined air flow management.
- _Available in colour RAL 9010 or RAL 9003
- _Delivered with plenum, duct connection diameter Ø 125 mm.



UM GRILL

- _The most flexible grill aluminium made with one or two line of fins totally adjustable for a complete air flow management.
- _A supplementary air damper can be installed for a more defined air flow control.
- _Installation with clip on the plenum for an easy maintenance.
- _Typical installation in vertical wall.
- _Basic size proposed : 200x100, 350x150.
- _Available in colour RAL 9010 or RAL 9003 or anodized aluminium
- _Delivered with plenum, duct connection diameter Ø 125 mm.



The grilles

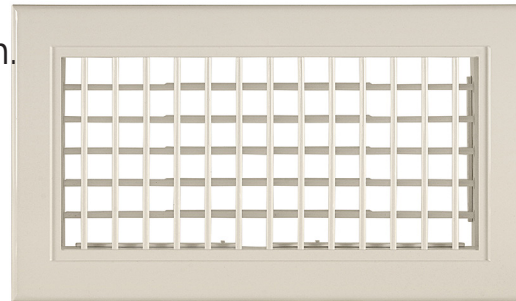
KLN diffuser

- _Aluminium made Linear diffuser for air diffusion with high Coanda effect.
- _Typical installation in the roof (counter ceiling).
- _Standard version proposed with 2 air slot with 500 mm lenght.
- _Delivered with plenum, duct connection diameter Ø 125 mm.



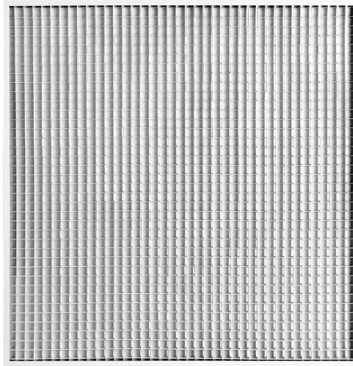
TE-BA grill

- _ABS plastic grill for a simple and quickly installation.
- _Colour RAL 9010, wall-installation.
- _Standard dimension proposed 300x100 and 400x150
- _Available with steel or ABS plenum



CF UQ extract grill

- _Egg crate grill with 45° inclination fixed fins specific for internal recirculation of extract air.
- _The orientation of the fins cover the view of the main unit in the counter ceiling.
- _Standard dimension proposed 600x600.
- _Colour RAL 9010



UVE extract valve

Realized in galvanized sheet metal and painted RAL 9010 can be used for inlet or suction air.

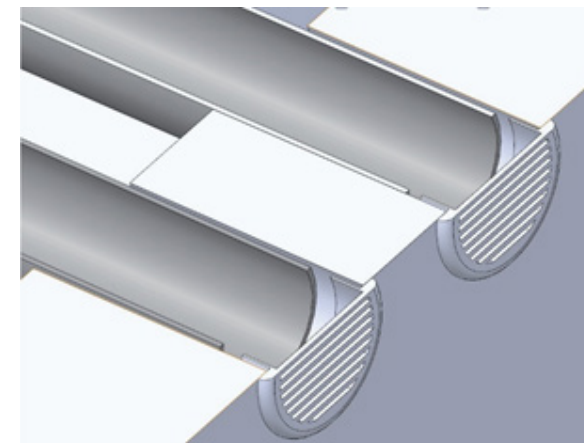
Standard size Diam 125.

- External frame dimensions Ø 140 mm
- Hole diameter Ø 125-130 mm
- Made of ABS plastic
- Standard colour white RAL 9010
- Fixed fins
- Possibility to use for fresh air intake and/or expulsion of exhaust VMC air



YGC

diameter 125 aluminium made with bird net as standard





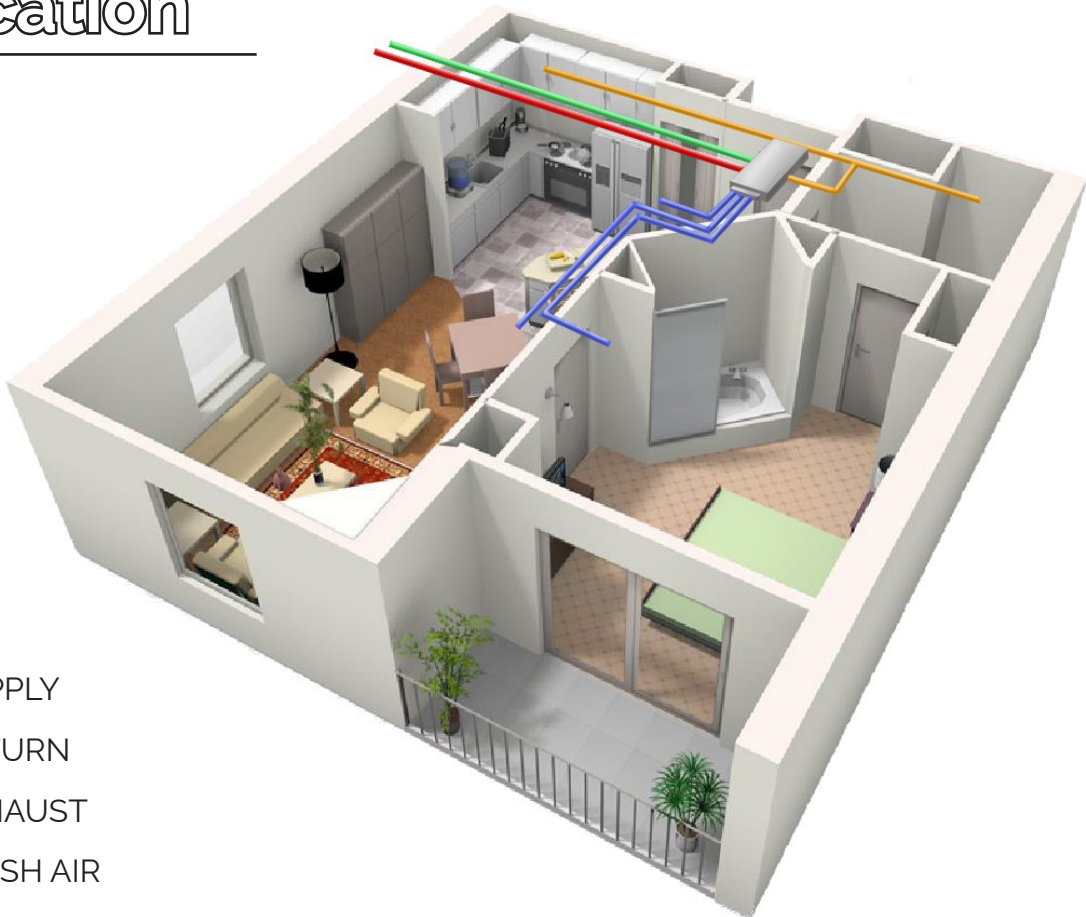
Data sheet

IVY		VMC 5	VMC 10
Total cooling capacity (Water in/out 7°-12°C) (1)	KW	5.31	10 kW (5.31 kW x 2)
Sensible cooling capacity (Water in/out 7°-12°C) (1)	KW	3.98	8 kW (3.98 kW x 2)
Total cooling capacity (Water in/out 12°-16°C) (2)	KW	3.09	6 kW (3.09 kW x 2)
Sensible cooling capacity (Water in/out 12°-16°C) (2)	KW	3.09	6 kW (3.09 kW x 2)
Total Heating capacity (Water in 50°C) (1)	KW	7.4	14.5 kW (7.4 kW x 2)
Total Heating capacity (Water in/out 45°-40°C) (3)	KW	6	12 kW (6 kW x 2)
Total Heating capacity (Water in/out 40°-35°C) (3)	KW	4.65	9.1 kW (4.65 kW x 2)
Total Heating capacity (Water in/out 35°-30°C) (3)	KW	3.26	6.5 kW(3.26 kW x 2)
Water capacity MIN	m3/h	200	200+200
Air capacity MAX (6 mt duct)	m3/h	1000	1000 + 1000
Fresh air	m3/h	100	200
Water in the coil	L	1,56 liters	1,56 liters x 2
Fans for inside air treatment		EC brushless	2 x EC brushless
VMC fans		2 x EC brushless	2 x EC brushless
Heat recovery efficiency		90%	90%
Heat recovery bypass (ErP 2018)		YES	YES
Suction air filter VMC		M5 Acrilic	M5 Acrilic
Inside air filter		G3	G3
Water valve		3 way / 4 doors	3 way / 4 doors
Water connection		3/4"	3/4"
Max eletric suction	W - A	270 Watt / 3.3 Amp	450 Watt / 3.3 Amp
Min eletric suction	W - A	120 Watt / 0.5 Amp	150 Watt / 0.7 Amp
Power supply	V-Ph-Hz	230-1-50	230-1-50
Length	mm	1160	1808
Width	mm	939	939
High	mm	240	240
Weight	kg	49	77

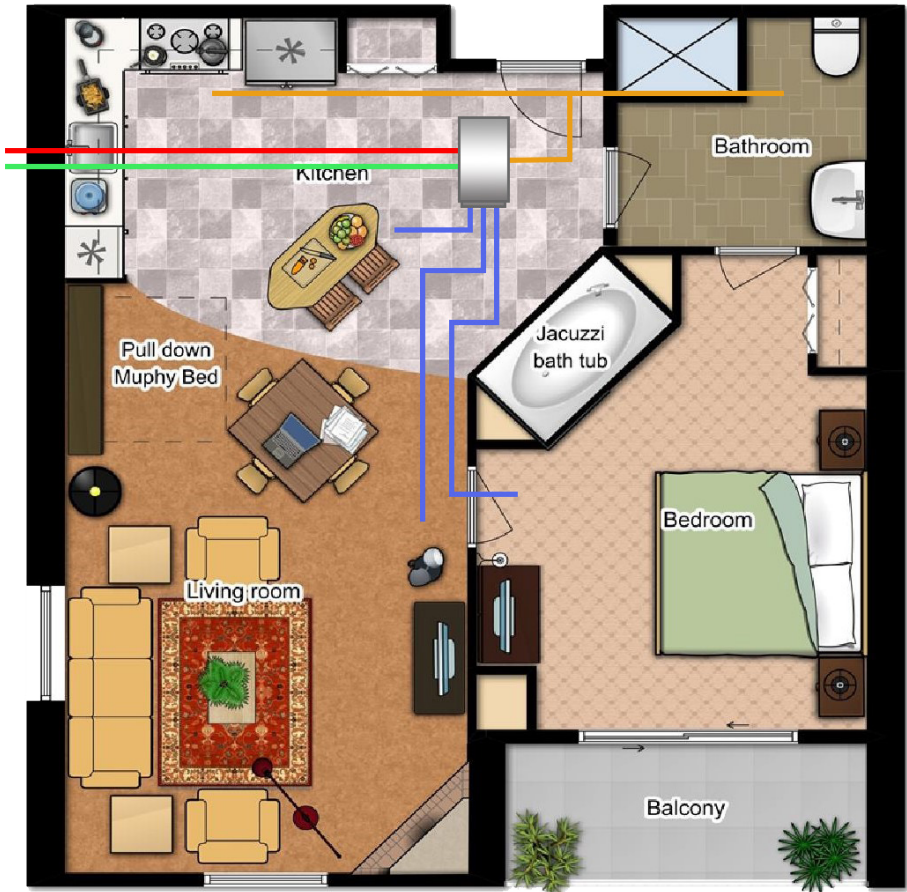
Legenda
(1) Eurovent standard .
Secondo EN14511
(2) Room temperature:
27°C/47%U.R.
(3) Room temperature: 20°C



Application



- : SUPPLY
- : RETURN
- : EXHAUST
- : FRESH AIR



Application



IVY 5

1, 2: YGC

(exhaust and fresh air)

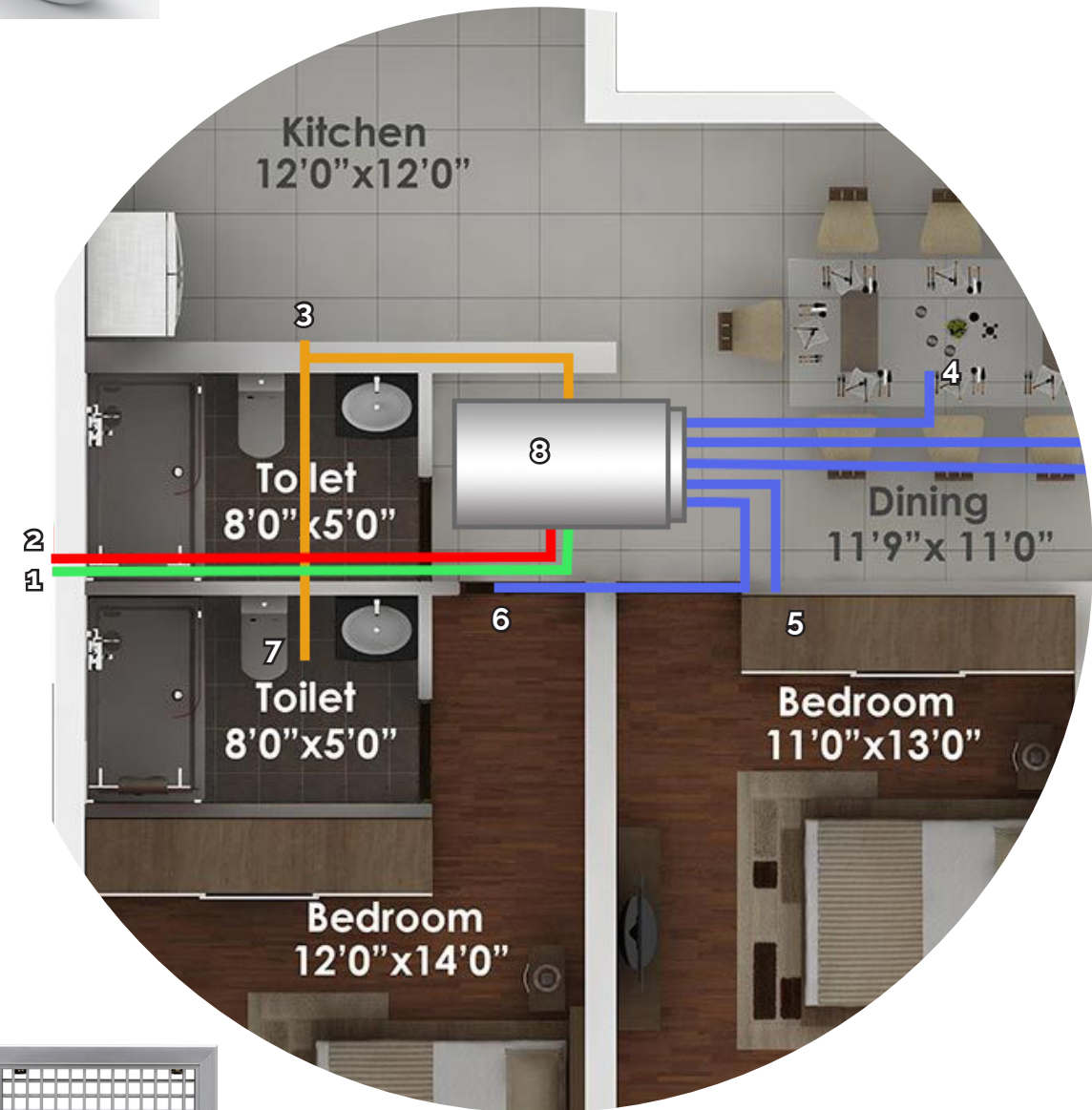
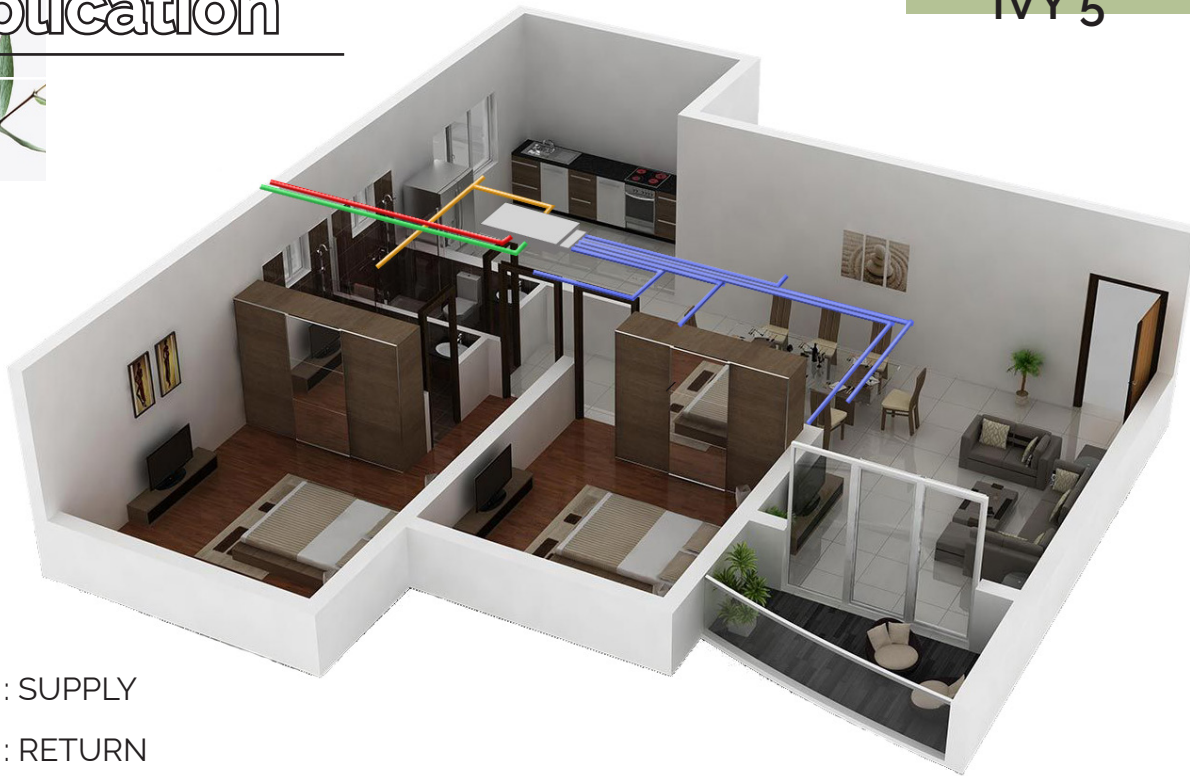
4: KLN

(supply. in the livingroom)

8: IVY VMC5

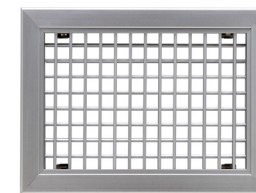


- : SUPPLY
- : RETURN
- : EXHAUST
- : FRESH AIR



3, 6, 5: UM GRILL

(extract, for the kitchen;
supply, in the bedroom)



7: UVE suction valve

(extract from the bathroom)

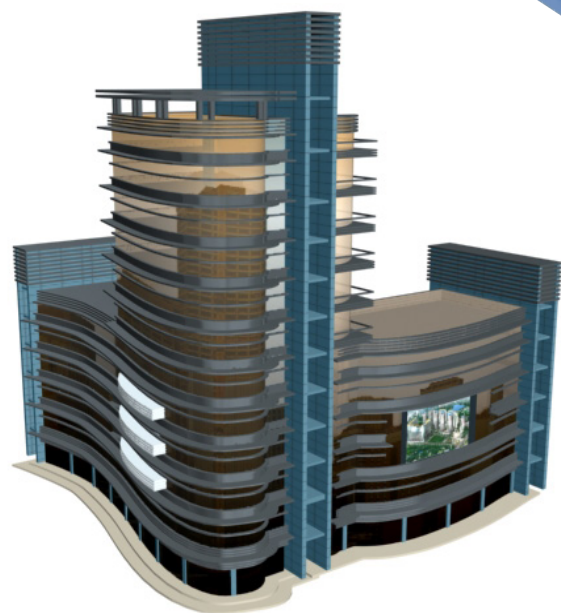


Application

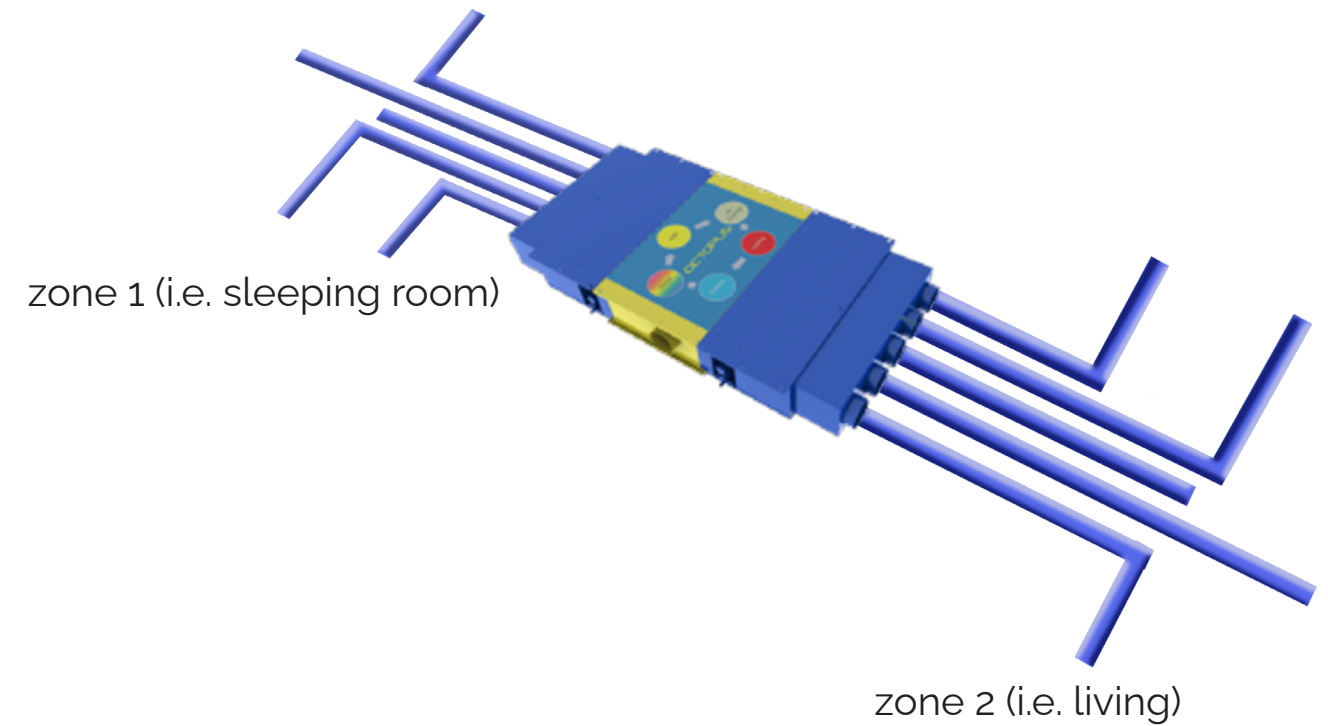
IVY 10 dual zone

RESIDENCIAL
LIGHT COMMERCIAL
SMALL OFFICES

LUXURY APPARTAMENT



one IVY for each appartement
and central heating pomp



NEED MORE KILOWATTS?

DAHLIA

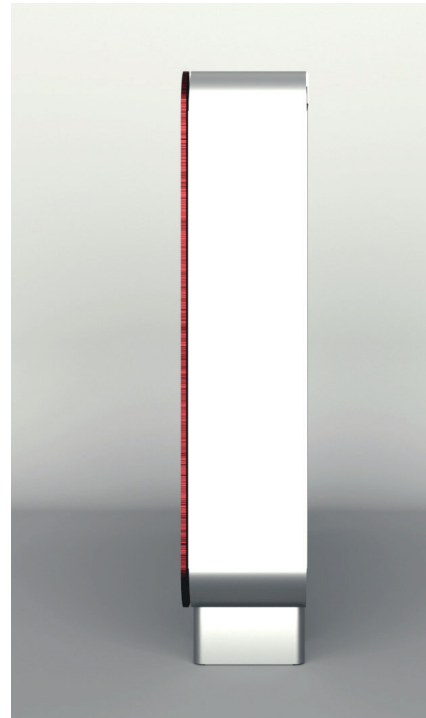
CUSTOMIZABLE AND EFFICIENT FANCOIL

Available in different shapes and colors

If the thermal power of IVY is not enough, is possible to complete the air conditioning plant with one or more Primerose fan coils, available in versions and colours matched to the style of the house:

For all Dahlia models:

- Super thin thickness, only 12cm
- Minimum silence below the audible threshold, 20 dB (A)
- DC Inverter technology
- Low power consumption, only 4 Watts
- Modern design
- Front panel in tempered glass
- Pleated stainless steel filters with unlimited life
- Tangential fan in aluminum for greater efficiency
- Very easy to use digital electronic control
- App for remote management via wi-fi



HW slim wall version

- Three sizes 400-600-800
- Power from 1.2 to 3.3 KW
- Width mm 873 (400) 1065 (600) 1257 (800)
- Height 383 mm



FS standard wall or ceiling version

- Four sizes 200-400-600-800
- Power from 0.8 to 4.2 KW
- Width mm 681 (200) 873 (400) 1065 (600) 1257 (800)
- Height 553 mm

SM low profile wall or ceiling version

- Four sizes 200-400-600-800
- Power from 0.58 to 3.3 KW
- Width mm 681 (200) 873 (400) 1065 (600) 1257 (800)
- Height 383 mm



BT bathroom

- One size fits all
- Power 1.4 KW
- Width 565 mm
- Height 1100 mm



