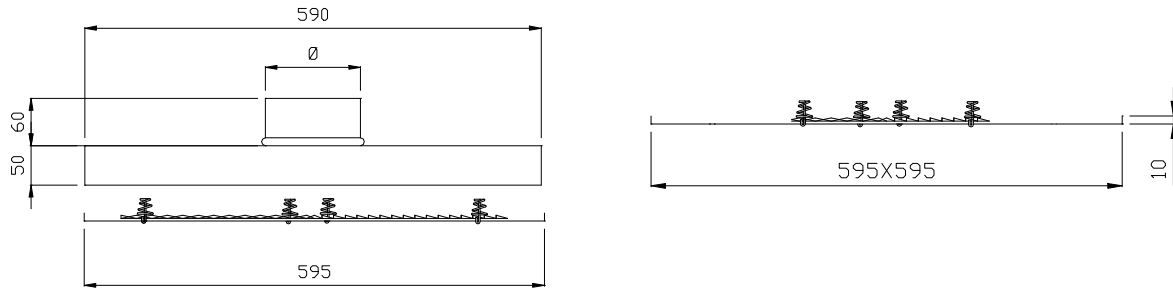


MULTIDIRECTIONAL DIFFUSERS WITH PERFORATED SCREEN

KT-KR
SERIES

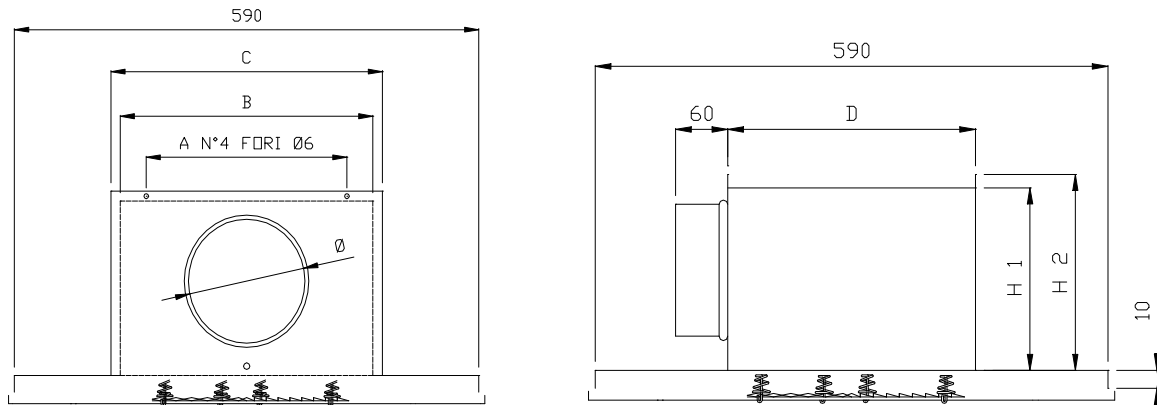
TECHNICAL CHARACTERISTICS

KT
Diffusers complete with plenum and 595 x 595 panel.



KT4-127 with 4 throws with connection greater than nominal diameter of 127.
Other available diameters 152-203-254-315.

KR
Diffusers complete with plenum and 595 x 595 panel.



KR4225-127 with 4 throws with connection greater than nominal diameter of 127.
Other available diameters 152-203-254.

DIMENSIONS

TECHNICAL DATA

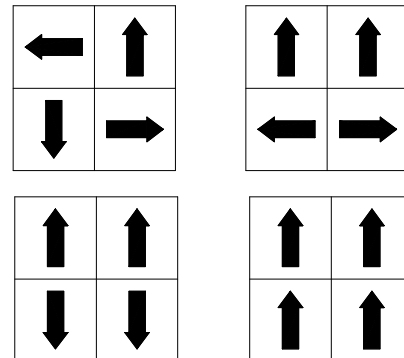
THROW COMBINATION

KT . 127
KT . 152
KT . 203
KT . 254
KT . 305

A	B	C	D	Ø	H1	H2
				123		
				148		
				199		
				250		
				301		

KR . 225-127
KR . 300-152
KR . 375-203
KR . 525-254

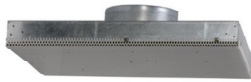
180	240	270	210	123	170	185
255	315	345	285	152	205	220
315	390	420	360	199	250	265
365	540	570	510	250	300	315



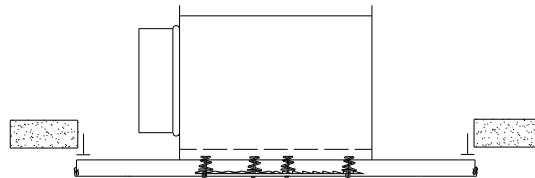
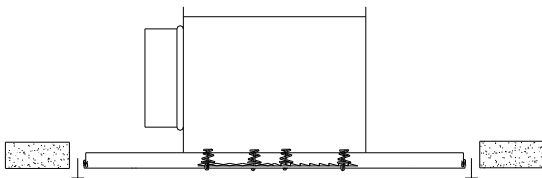
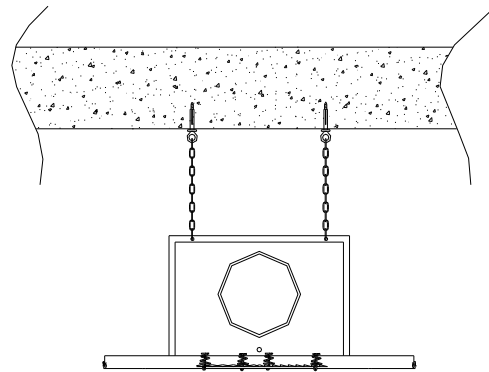
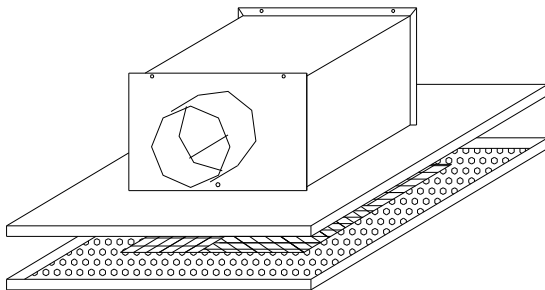
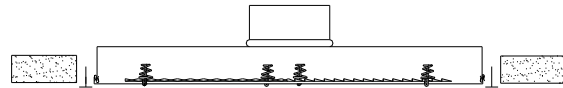
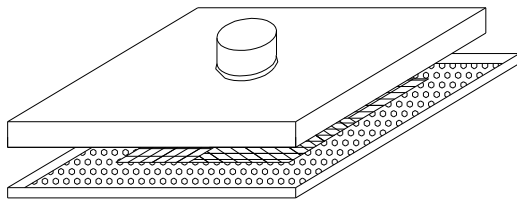


MULTIDIRECTIONAL DIFFUSERS WITH PERFORATED SCREEN

KT-KR
SERIES



INSTALLATION EXAMPLE

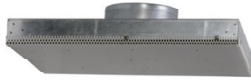


TECHNICAL DATA: The KT-KR series diffusers consist of an external removable panel and a plenum connected with connection above or to the side. Inside there are positioned removable deflectors that, by varying their position, allow to modify the air direction, obtaining single or combined air flows. The front screen and the plenum have been designed without any blocking sector to guarantee the use of 100% of the surface A_k maintaining unchanged the air flow, the noise level and the pressure losses. For this reason this aerodynamic component is suitable in all those applications where it is necessary to heat and cool. Clearly, in the same way, it may be also used in ceilings for air extraction removing the direction components. The range of the anemostat has a range of use from 2,6 metres to a maximum of 4 metres in height.

MATERIALS: The panel is made from steel sheet with an epoxy surface treatment colour RAL 9010. The plenum is made from galvanized sheet steel.

FIXING: The plenum is fixed directly to the ceiling using support brackets.

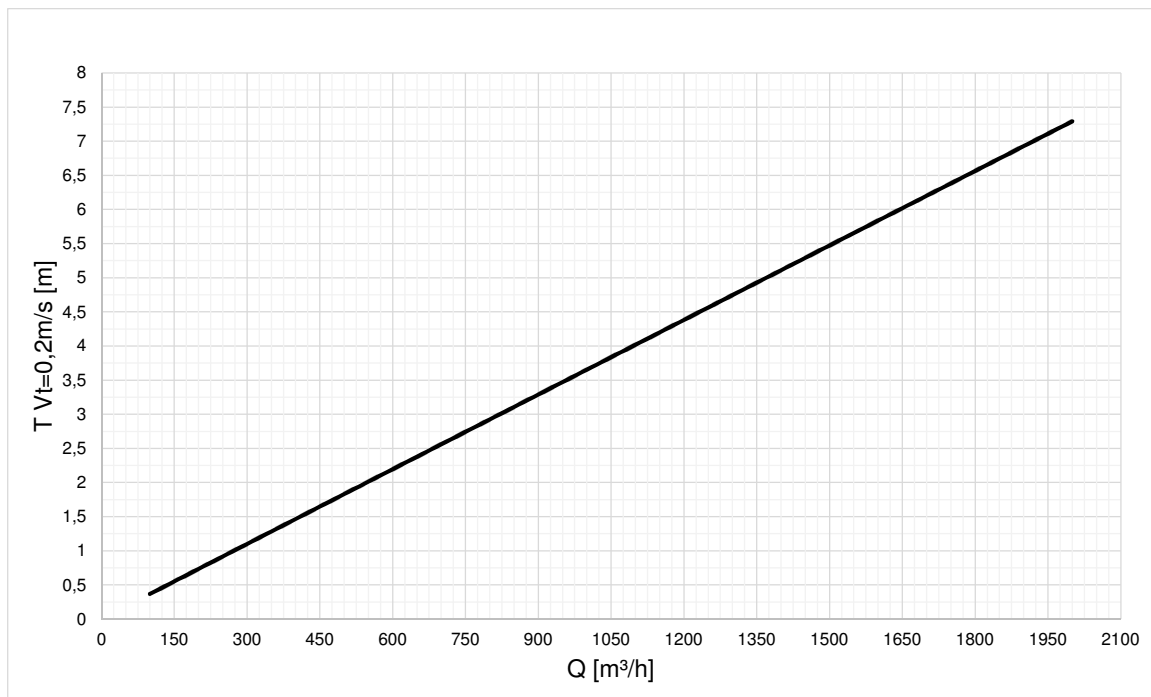
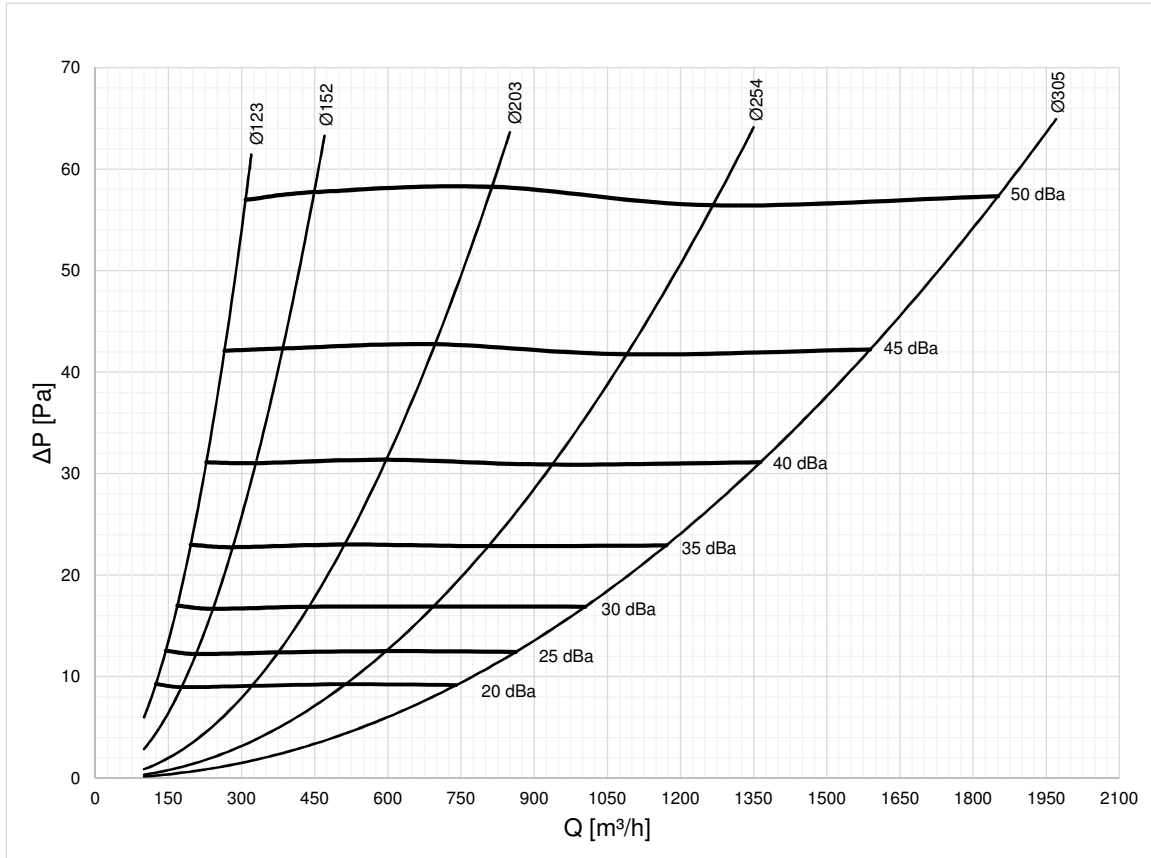
UNSUITABLE ENVIRONMENTS: The products in painted carbon steel are not suitable for installation in environments with high humidity and in environments with a potentially explosive atmosphere or containing powders or vapors of corrosive substances.



MULTIDIRECTIONAL DIFFUSERS WITH PERFORATED SCREEN

KT-KR
SERIES

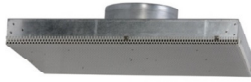
PERFORMANCE
WITHOUT INTERNAL DEFLECTORS



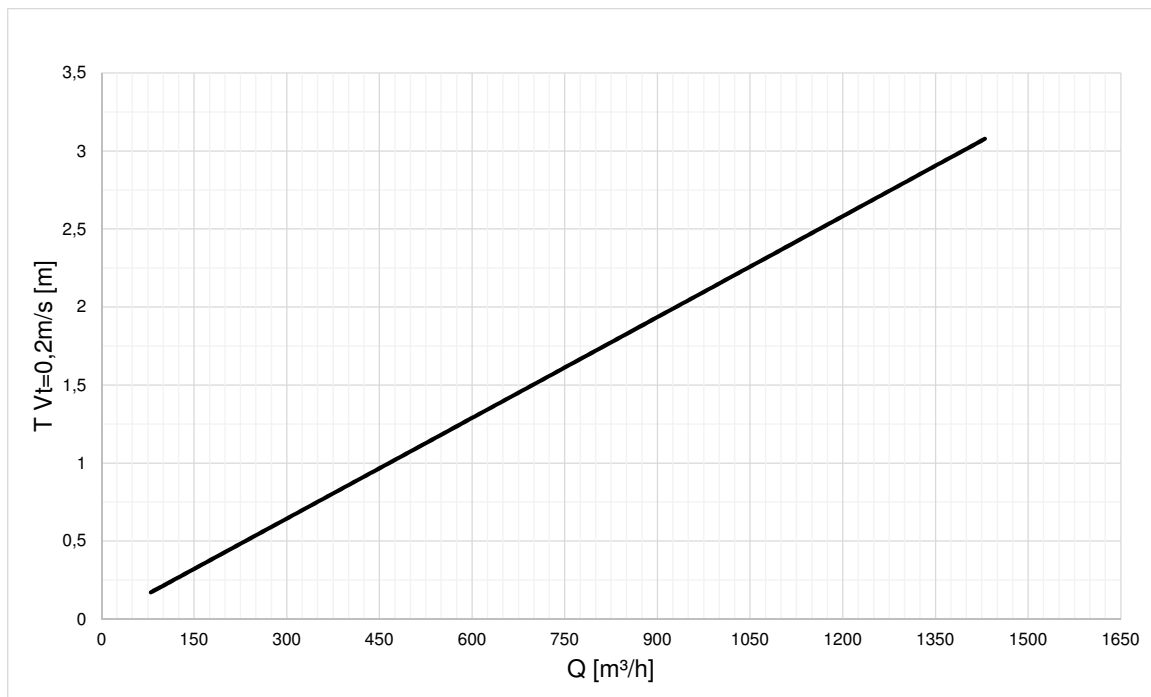
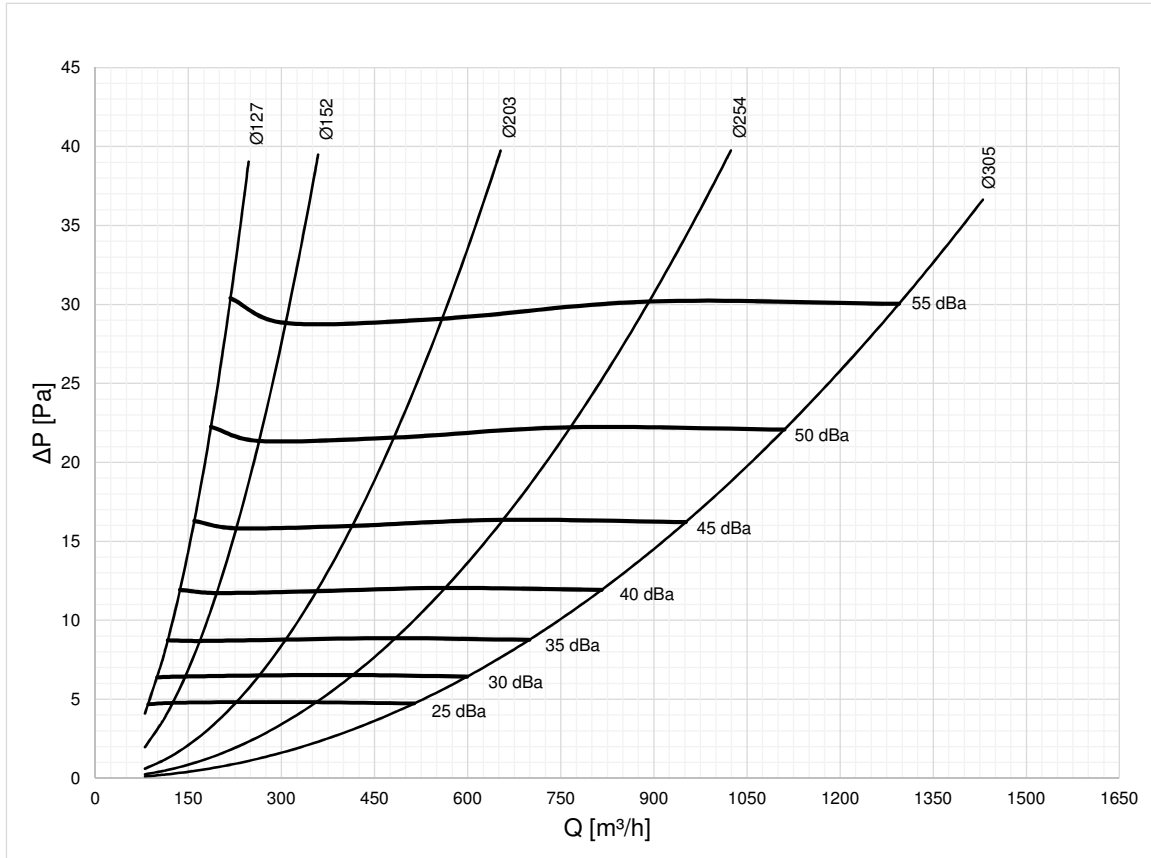


MULTIDIRECTIONAL DIFFUSERS WITH PERFORATED SCREEN

KT-KR
SERIES



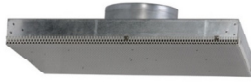
PERFORMANCE
WITH INTERNAL DEFLECTORS



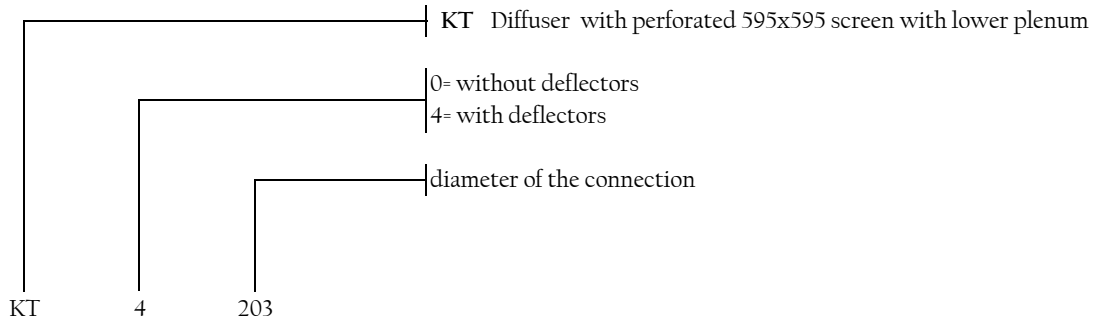


MULTIDIRECTIONAL DIFFUSERS WITH PERFORATED SCREEN

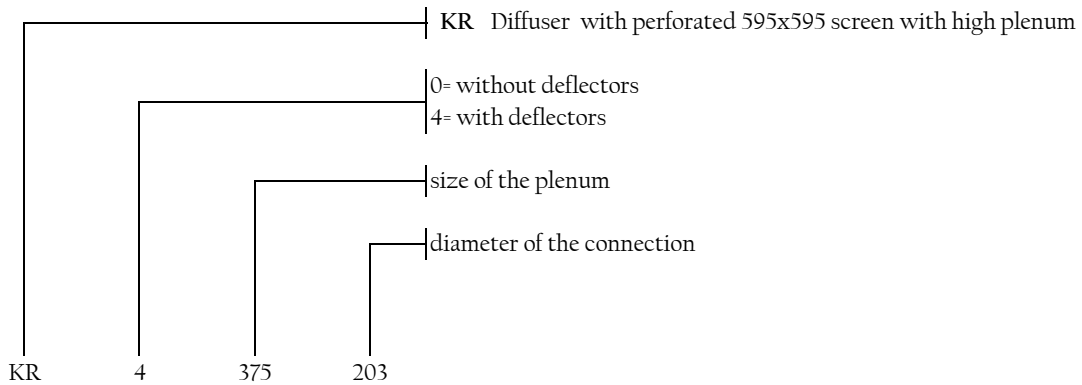
KT-KR
SERIES



HOW TO ORDER



standard dimensions	
screen	connection
595x595	127
595x595	152
595x595	203
595x595	254
595x595	305



standard dimensions		
screen	plenum	connection
595x595	225	127
595x595	300	152
595x595	375	203
595x595	525	254

KE Only 595x595 perforated panel RAL 9010 with deflectors

KF Only 595x595 perforated panel RAL 9010 without deflectors