

GRILLES WITH SQUARE MESH FOR COUNTERCEILINGS

CF-UQ
SERIES

OVERVIEW TECHNICAL CHARACTERISTICS

OVERVIEW

The CF-UQ series of egg crate diffusers have been specifically designed to be used within modular ceilings and have a particular thin frame that once installed becomes invisible. This specific geometry allows to obtain very high values of free space for the air flow therefore reducing the air flow losses almost to a minimum.

The CF-UQ egg crate diffusers are available in two versions:

A versions with a straight mesh for a vertical through used in air extraction.

A versions with an angled mesh with for a 45° air flow. This version obstructs the view to the inside of the plenum box once the diffuser is installed in the modular ceiling.

Both versions can be integrated with flat filter class G3 6mm thick fixed to the grid with a special kit

TECHNICAL CHARACTERISTICS

Aluminium press-bent frame, 10mm wide.

Egg crate mesh with 13mm pitch

Version with an angled mesh with for a 45° air RAL 9010 paint finish

ACCESSORIES

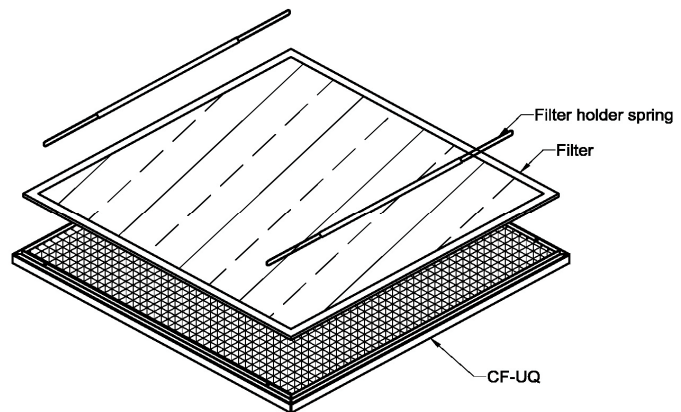
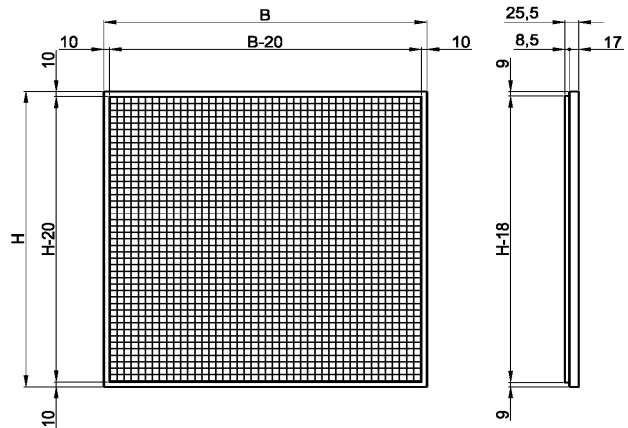
The diffuser can be fitted with with:

6mm thick flat filter with kit of two springs for fixing the filter to the grid;

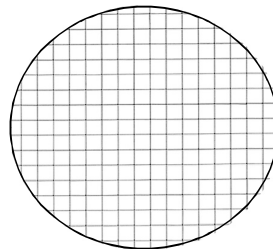
Steel plenum with or without insulation suitable for the diffuser without filter as for the diffuser with filter.

UNSUITABLE ENVIRONMENTS

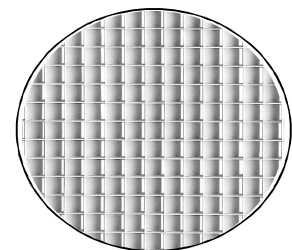
The aluminum products are not suitable for installation in environments with an atmosphere containing corrosive substances for this material and in particular containing chlorine, such as swimming pools, spas and some types of food industries.



Filter holder kit



CF-UQ0R
vertical mesh



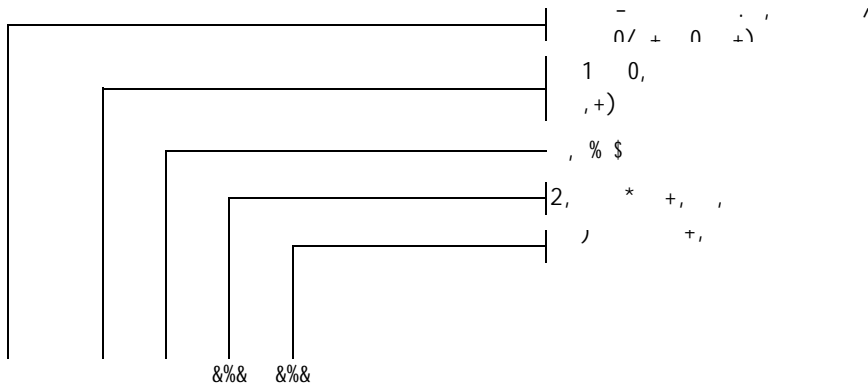
CF-UQ4R
angled mesh

nominal size	B (mm)	H (mm)	Size of the filter (optional) (mm)	Filter class EN 779
595 x 295	595	295	572x272x6	G3
595 x 595	595	595	572x572x6	G3
670 x 670	270	270	647x647x6	G3

'&	\$	##	"
#	\$	%	"
#&	\$%	&#	"
	&	'	"
!	&#	\$&	\$
(%#	'#	
\$!!	#
\$&	#%	%	\$
\$'	##%	\$	'

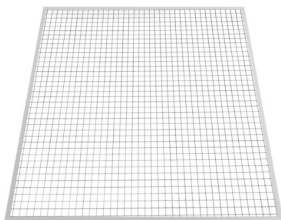
&	\$!	"
&&	\$	#\$	"
!&	\$'		"
(&	!!	"
\$\$	'	\$	\$
\$&	('	#	
	\$(%\$	%
&	#'	!##	#
#	#	%%\$	#(

!"# !"#			
%	\$(%	"
\$\$	'	'	"
\$	#	((\$
\$#	#'	\$	\$
	(!	\$	&
!	\$!	(
	###	%&#	##%
	#!'	\$&\$	\$
&	\$%	\$	



\$\$\$ &'%
 * *+(,&' ,+-. / (0% ,+1(%'
 8!&' ' -#0, &' *' *! /) &&* %&
 8!&' &' -#0, &' *&' *! /) &&*%&&
 8!! '!' -#0, ! '!' '!' /) !' *!'

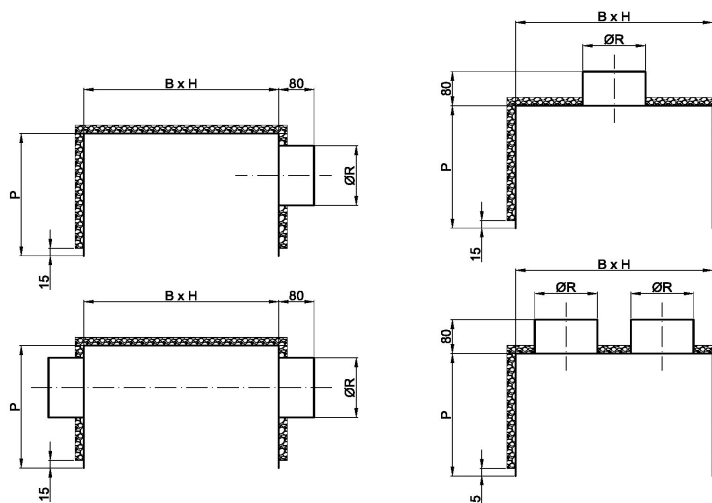
&(%)
) 0/ 3/ 249
)
 *+) 6
 /2 / 3, , 4
 5 *+) 6 , / , 7 /)



GRILLES WITH SQUARE MESH FOR COUNTERCEILINGS

CF-UQ
SERIES

PLENUM



PP90 lateral connection

CF-UQ	maximum air flow m ³ /h	B mm	H mm	P mm	ØR mm	number of connections	Material of the connections
595x295	600	581	281	290	200	1	ABS (*)
595x295	1700	581	281	290	200	2	ABS (*)
595x595	1500	581	581	400	300	1	Steel
595x595	3000	581	581	400	300	2	Steel
670x670	1300	656	656	400	315	1	Steel
670x670	4500	656	656	400	315	2	Steel

PP91 rear connection

CF-UQ	maximum air flow m ³ /h	B mm	H mm	P mm	ØR mm	number of connections	Material of the connections
595x295	600	581	281	290	200	1	ABS (*)
595x295	1700	581	281	290	200	2	ABS (*)
595x595	1500	581	581	400	300	1	Steel
595x595	3000	581	581	400	400	1	Steel
670x670	1300	656	656	400	315	1	Steel
670x670	3000	656	656	400	400	1	Steel
670x670	4500	656	656	400	450	1	Steel

(*) Steel on request

