

Variable air-flow rate units



CL-VRR Rectangular regulators p. S 3



CL-VRC Circular regulators p. S 5

Variable air-flow rate units



CL-VCC Variable airflow compact p. S 7



CL-VCL Variable airflow extra silenced p. S 9

Costant air-flow rate units



AT-RPR Rectangular constant air-flow rate regulators p. S 11



AT-RPC Circular constant air-flow rate regulators p. S 13



AT-KVR PVC constant air-flow rate regulators p. S 14



MP3

advanced air diffusion

Index
vav & cav

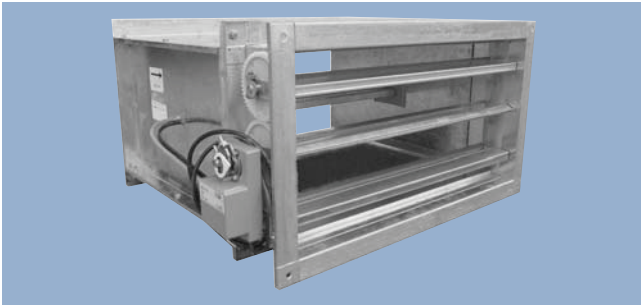
vav & cav

Index



Version 08/02

MP3



Overview

The CL-VRR series of variable airflow regulators are terminal regulation units of the air flow used in single duct systems with a working range between 20 and 1000Pa. These regulators are used to control and maintain the air quantity in the variable air flow systems. The complete closure has been tested on the basis of EN 1751-EN 1886 norms.

Technical data

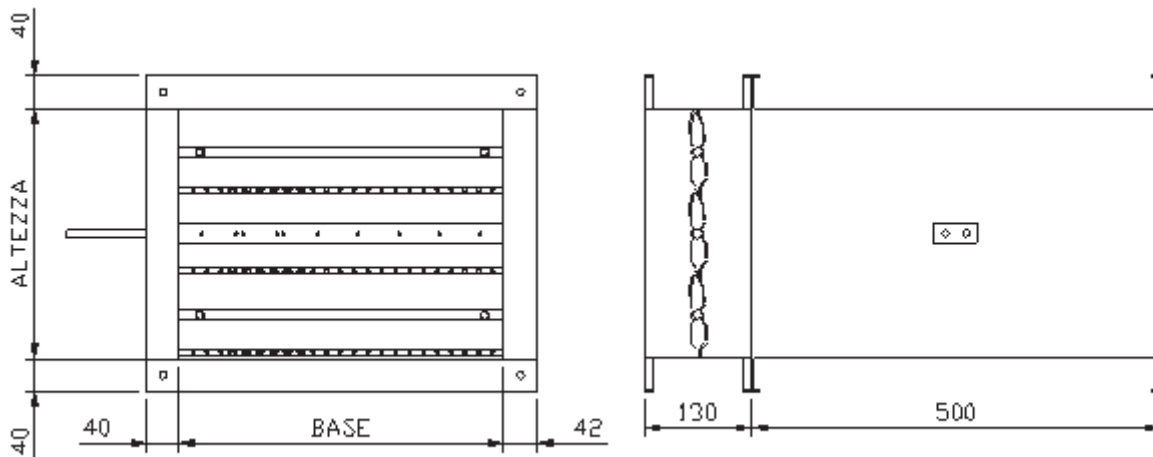
The CL-VRR type regulators are composed from:

- galvanized steel casing in various dimensions, equal to the standard square duct sizes used on the market;
- regulation damper in galvanized steel with air tight seals along the width and the sides;
- measuring probe for Δp to measure and maintain the air flow rate in relation to the required levels;
- aligned motorized regulator for the regulation and control of the air flow.

When ordering, the maximum and minimum air flow values must be indicated to correctly calibrate the regulator.

The maximum air flow value must be lower or equal to the nominal air flow. The minimum value required will be greater or equal to 30% of the maximum value with a Belimo NMV-D2MPVC and greater or equal to 10% of the same value when other motors are offered.

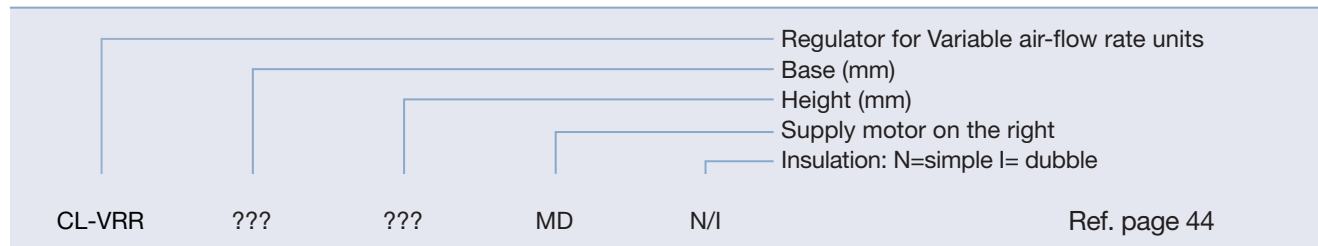
Dimensions







BxH [mm]	Nominal Load [m³/h]
200x110	750
400x110	1500
600x110	2300
400x210	3000
600x210	4500
800x210	6000
600x310	6600
800x310	8900
1000x310	11000
600x410	8800
800x410	11800
1000x410	14500



How to order



Available Motors

Pictures	Model	Code
	Siemens GDB181.1/E3	CL-VMA
	Belimo LMV-D2MPVC	CL-VMB
	Belimo NMV-D2MPVC	CL-VMC
	Belimo NM24V + reg. VRD2	CL-VMD

vav e cav

CL-VRR Series





Overview

The CL-VRC series of variable airflow regulators are terminal regulation units of the air flow used in single duct systems. These regulators are used to control and maintain the air quantity in the variable air flow systems. The complete closure has been tested on the basis of EN 1751-EN 1886 norms.

Technical data

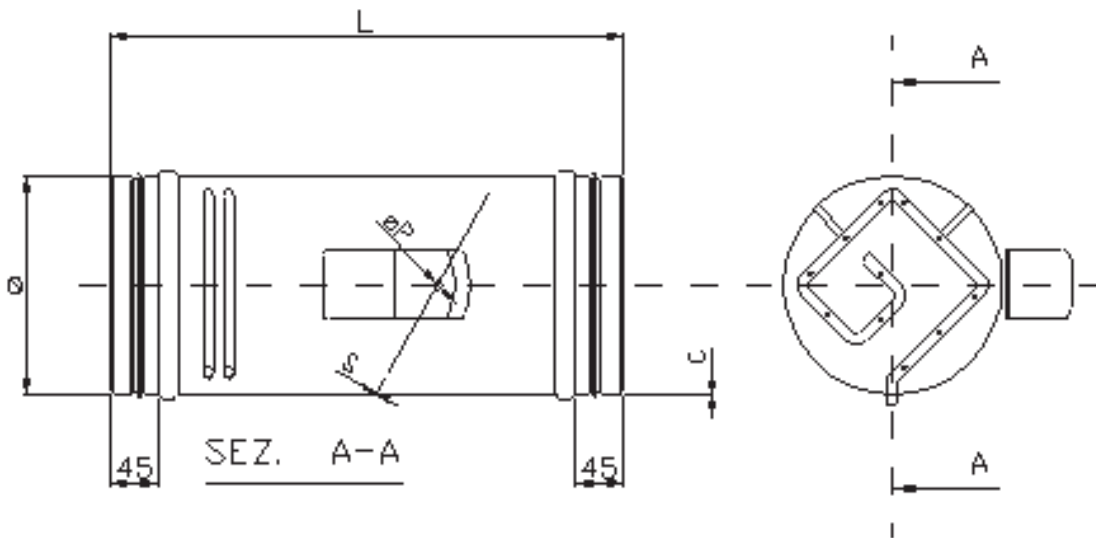
The CL-VRC type regulators are composed from:

- galvanized steel casing with diameters ranging from 125 to 400mm, equivalent to the standard circular duct sizes used on the market;
- regulation damper in galvanized steel with air tight seals along the width and the sides;
- measuring probe for Δp to measure and maintain the air flow rate in relation to the required levels;
- aligned motorized regulator for the regulation and control of the air flow.

When ordering, the maximum and minimum air flow values must be indicated to correctly calibrate the regulator.

The maximum air flow value must be lower or equal to the nominal air flow value. The minimum value required will be greater or equal to 30% of the maximum value with a Belimo NMV-D2MPVC and greater or equal to 10% of the same value when other motors are offered.

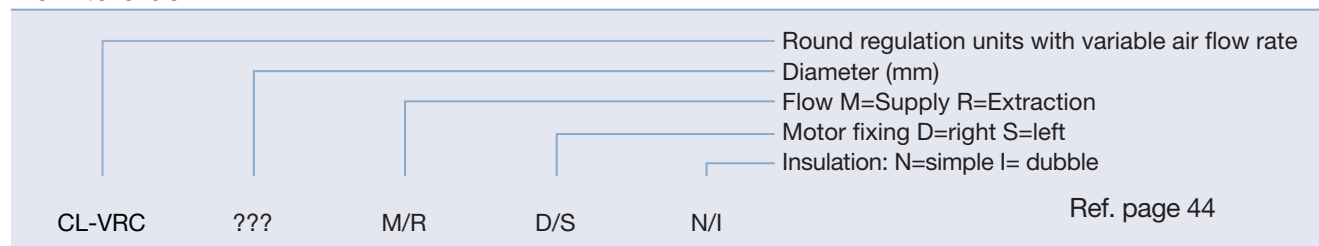
Dimensions







Ø (mm)	Ø P (mm)	S (mm)	L (mm)	C (mm)	Nominal Load (m ³ /h)
125	8	0,6	370	0,8	570
160	8	0,6	415	0,8	950
200	8	0,6	470	0,8	1500
250	8	1,2	540	0,8	2300
315	12	1,2	630	0,8	3600
355	12	1,2	685	0,8	4800
400	12	1,2	750	0,8	6300



How to order



Available Motors

Pictures	Model	Code
	Siemens GDB181.1/E3	CL-VMA
	Belimo LMV-D2MPVC	CL-VMB
	Belimo NMV-D2MPVC	CL-VMC
	Belimo NM24V + reg. VRD2	CL-VMD

vav e cav

CL-VRC Series





Overview

The CL-VCC series of variable airflow regulators are terminal regulation units of the air flow. The units have a very compact silencer for use in single duct systems with a working range between 20 and 1500Pa. These regulators are used to control and maintain the air quantity in the variable air flow systems. The complete closure has been tested on the basis of EN 1751-EN 1886 norms.

Technical data

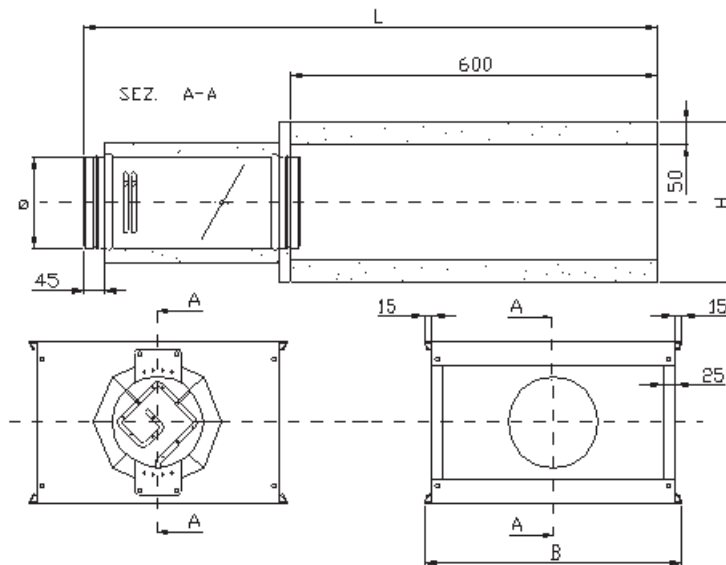
The CL-VCC type regulators are composed from:

- galvanized steel casing with perforated lugs for fixing by drop rod or wire;
- circular entry hole on high velocity side with measuring probe for dynamic Δp to measure and maintain the air flow in relation to the required levels;
- rectangular exit on low velocity side;
- very compact silencer section with noise reducing material in rock wool covered with black velovetro , with fire class M0;
- circular regulation damper in galvanized steel with air tight seals;
- aligned motorized regulator for regulating and controlling the air flow.

When ordering, the maximum and minimum air flow values must be indicated to correctly calibrate the regulator.

The maximum air flow value must be lower or equal to the nominal air flow. The minimum value required will be greater or equal to 30% of the maximum value with a Belimo NMV-D2MPVC and greater or equal to 10% of the same value when other motors are offered.

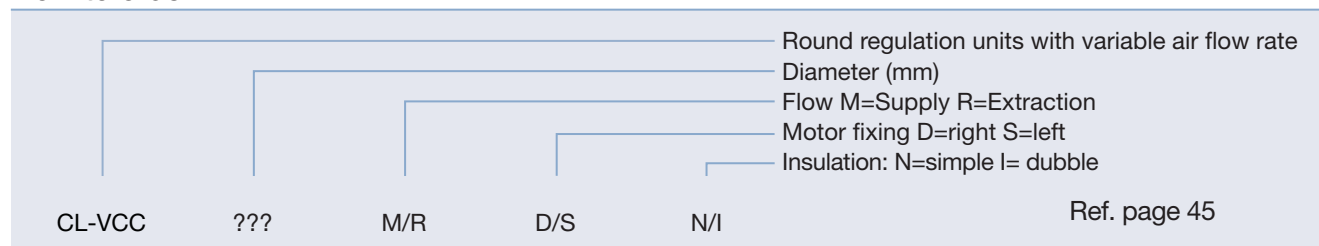
Dimensions







Ø (mm)	B (mm)	H (mm)	L (mm)	Nominal Load (m ³ /h)
125	380	270	950	570
160	380	270	995	950
200	560	360	1050	1500
250	560	360	1120	2300
315	780	460	1210	3600
355	780	460	1265	4800
400	980	510	1330	6300



How to order



Available Motors

Pictures	Model	Code
	Siemens GDB181.1/E3	CL-VMA
	Belimo LMV-D2MPVC	CL-VMB
	Belimo NMV-D2MPVC	CL-VMC
	Belimo NM24V + reg. VRD2	CL-VMD

vav e cav

CL-VCC Series





Overview

The CL-VCL series of variable airflow regulators are terminal regulation units for the air flow. The units have high quality silencers for use in single duct systems with a working range between 20 and 1500Pa. These regulators are used to control and maintain the air quantity in variable air flow systems. The complete closure has been tested on the basis of EN 1751-EN 1886 norms.

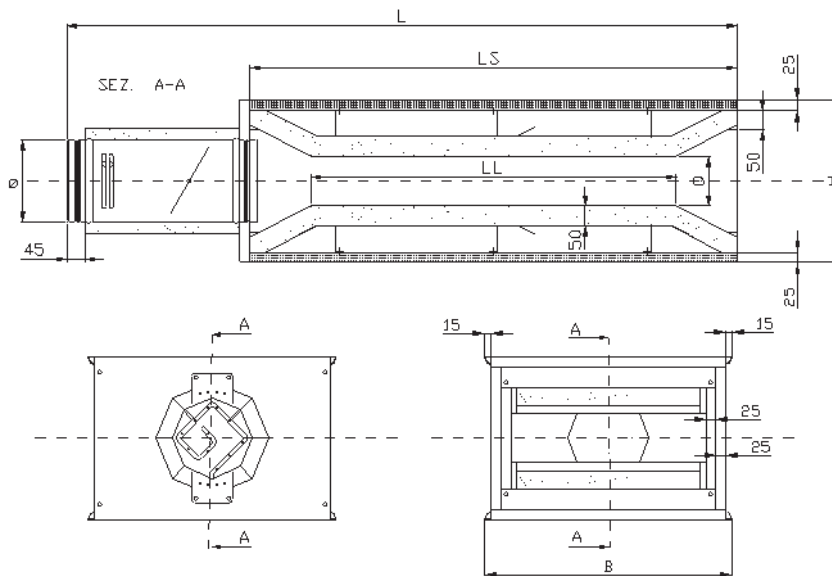
Technical data

The CL-VCL type regulators are composed from:

- galvanized steel casing with perforated lugs fixing by drop rod or wire;
- circular entry hole on high velocity side with measuring probe for dynamic Δp for measuring and maintaining the air flow in relation to the required levels;
- rectangular exit on low velocity side;
- silencer section with Venturi tube with noise reducing material in rock wool covered with black velovetro , with fire class M0, available with both single and double isolation and internal protection net;
- circular regulation damper in galvanized steel with air tight seals;
- aligned motorized regulator for regulating and controlling the air flow.

When ordering, the maximum and minimum air flow values must be indicated to correctly calibrate the regulator. The maximum air flow value must be lower or equal to the nominal air flow value. The minimum value required will be greater or equal to 30% of the maximum value with a Belimo NMV-D2MPVC and greater or equal to 10% of the same value when other motors are offered.

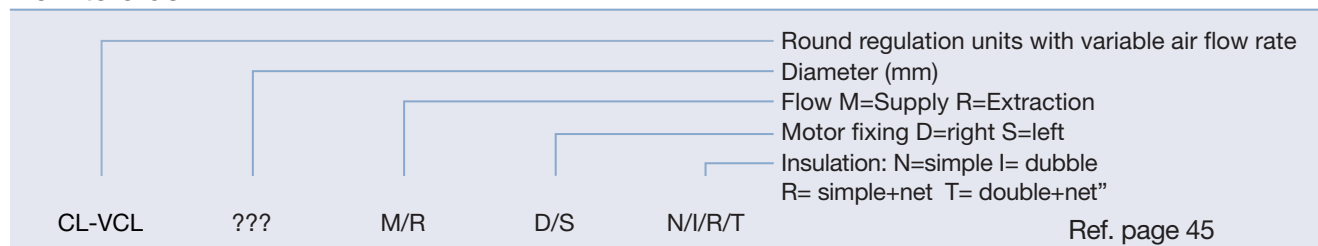
Dimensions



Ø (mm)	B (mm)	H (mm)	L (mm)	Q (mm)	LS (mm)	LL (mm)
125	430	320	1350	90	1000	800
160	430	320	1395	90	1000	800
200	610	410	1650	130	1200	900
250	610	410	1720	130	1200	900
315	830	510	2010	180	1400	1000
355	830	510	2065	180	1400	1000
400	1030	560	2230	230	1500	1100



How to order



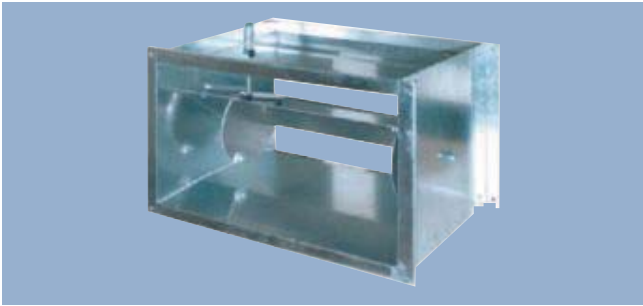
Available Motors

Pictures	Model	Code	€
	Siemens GDB181.1/E3	CL-VMA	
	Belimo LMV-D2MPVC	CL-VMB	
	Belimo NMV-D2MPVC	CL-VMC	
	Belimo NM24V + reg. VRD2	CL-VMD	

vav e cav

CL-VCL Series





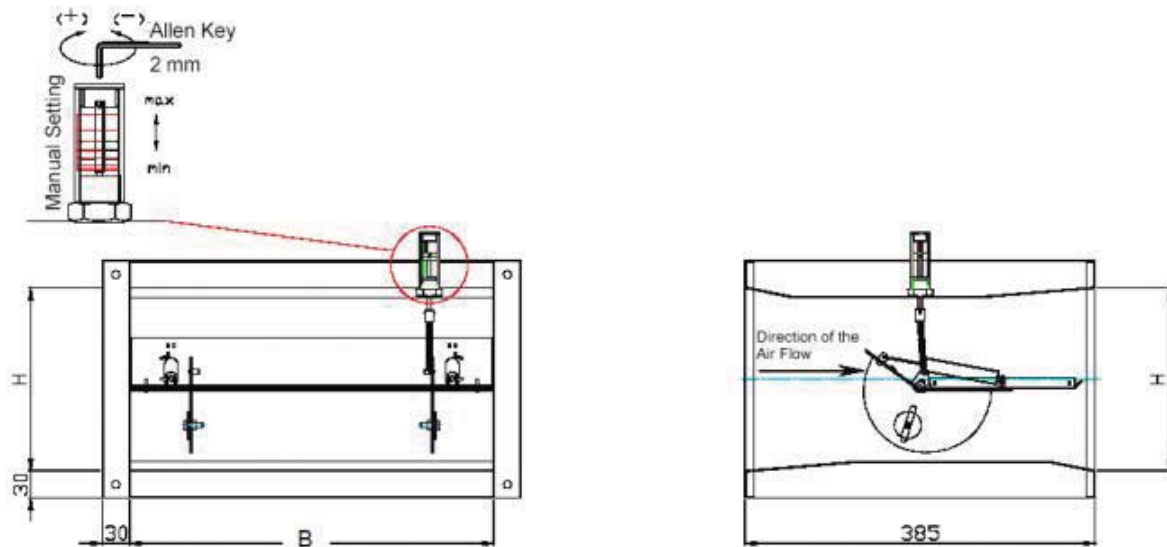
Overview

The AT-RPR Series units are CAV rectangular section air-flow rates regulation boxes. These components are employed to give a constant air-flow independent from the pressure change of the pipe.

Technical data

- Standard length 385 mm
- Base-board inbetween 150 mm and 600 mm
- Height inbetween 150 mm and 300 mm
- Base inbetween the height value and its double ($H \leq B \leq 2H$)
- Galvanized steel sheet cover
- Fixing by 4 holes on flanges of 30 mm thickness
- Independent mechanical starter from external electricity-flow
- Electric or pneumatic starter on demand
- Calibration value of the changeable air-flow rate in service
- Usage temperature between $-30\text{ }^{\circ}\text{C}$ and $+100\text{ }^{\circ}\text{C}$
- Air-speed between 3 m/s and 10 m/s (recommended value 6,5 m/s)

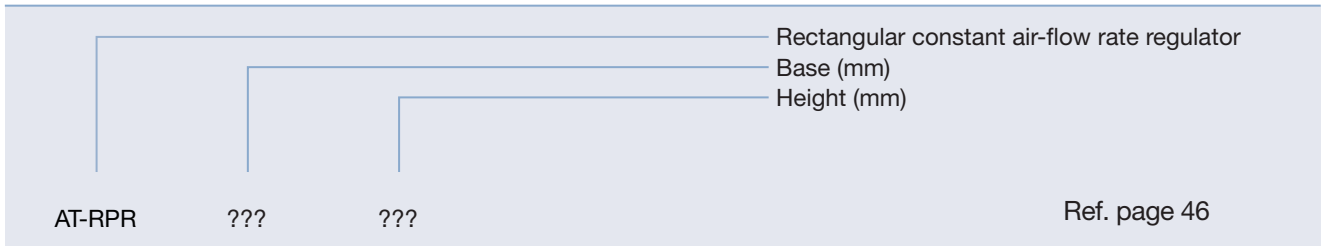
Dimensions



Model	Load [m ³ /h]	Speed [m/s]	Maximum Noise L _{PA} [dB(A)]
AT-RPR 150x150	250-750	3-10	72
AT-RPR 300x150	500-1.450	3-10	74
AT-RPR 200x200	450-1.300	3-10	74
AT-RPR 300x200	650-1.950	3-10	75
AT-RPR 400x200	850-2.600	3-10	76
AT-RPR 300x300	950-2.900	3-10	77
AT-RPR 450x300	1.500-4.400	3-10	78
AT-RPR 600x300	2.000-5.800	3-10	78



How to order



vav e cav

AT-RPR Series





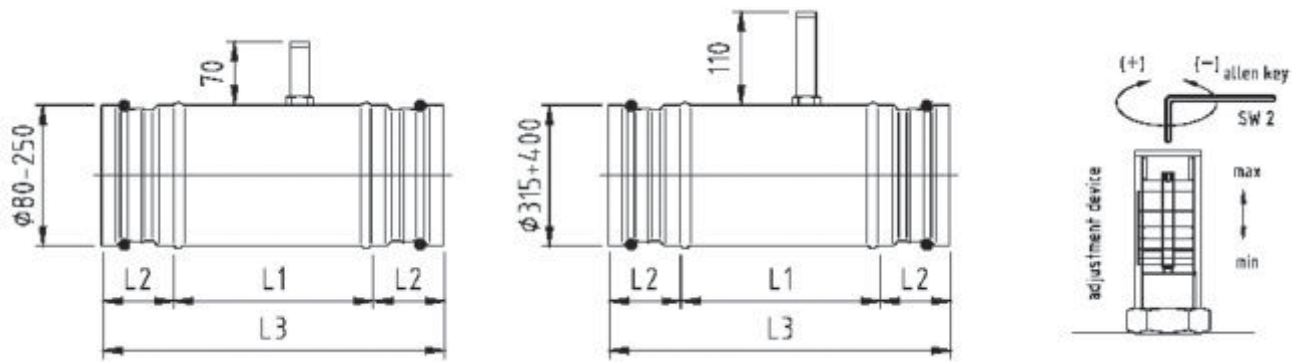
Overview

The AT-RPC Series units are CAV circular section air-flow rates regulation boxes. These components are employed to give a constant air-flow independent from the pressure change of the pipe

Technical data

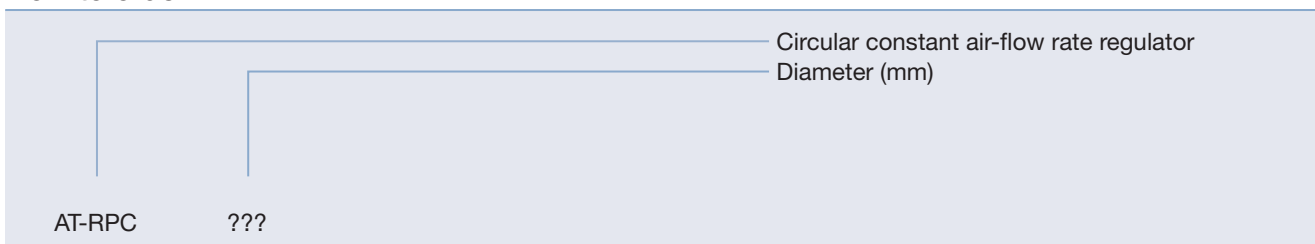
- Available diameters from 100 up to 400 mm
- Galvanized steel sheet cover
- Fixing by grafting with sealing gasket
- Independent mechanical starter from external electricity-flow
- Electric or pneumatic starter on demand
- Calibration value of the changeable air-flow rate in service
- Usage temperature between -30 °C and +100 °C
- Recommended air-speed 4,5 m/s (should not be inferior to 2,7 m/s)

Dimensions



Model	Ø (mm)	L1 (mm)	L2 (mm)
AT-RPC 100	100	170	40
AT-RPC 125	125	170	40
AT-RPC 160	160	240	40
AT-RPC 200	200	240	40
AT-RPC 250	250	240	40
AT-RPC 315	315	220	60
AT-RPC 400	400	295	60

How to order





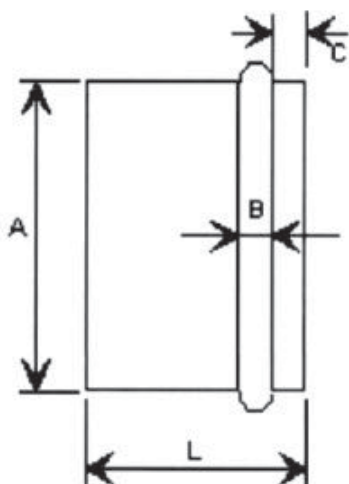
Overview

The AT-KVR Series units are PVC CAV circular section regulators. These components are employed to give a constant air-flow independent from the pressure change of the pipe.

Technical data

- Available diameter from 80 up to 250 mm
- PVC cover and regulation valve
- Independent mechanical starter from external electricity-flow
- Constant air-flow rate guarantees for losses of load in-between 50 and 200 Pa functioning
- 60 °C maximum usage temperature

Dimensions



Model	Ø (mm)	A (mm)	L (mm)	B (mm)	C (mm)	Load (m³/h)
AT-KVR 80	80	78	90	15	13	[15-60]
AT-KVR 100	100	95	90	15	13	[15-100]
AT-KVR 125	125	119	90	15	13	[15-180]
AT-KVR 160	160	154	120	15	18	[120-300]
AT-KVR 200	200	194	120	15	18	[210-500]
AT-KVR 250	250	-	-	-	-	[300-700]

How to order

Rate regulator in PVC
Diameter (mm)
Load

AT-KVR ??? ???

Ref. page 47

