

**Absolute filter-holder endings**



**PP 30F** With supply deflection grille **p. W 3**



**FY-10** For filter 305x305  
**FY-21** For filter 457x457  
**FY-30** For filter 545x545  
**FY-40** For filter 610x610 **p. W 4**

**1st filtering stage**



**FR** Rolls filtering baffles, th. 10-15-20-25 mm **p. W 5**



**FP** 22-48 mm thickness flat filters **p. W 6**



**FO** 48-98 mm thickness waved filters **p. W 7**



**FPI** 12-22 mm thickness stainless steel flat filters **p. W 8**



**FC** Absorption filters of active coals in cylindrical cartridges **p. W 9**

**2nd filtering stage**



**FTR** Rigid bag filters of sintetic microfiber **p. W 10**

**3rd filtering stage**



**FA** Absolute filters for 68 mm laminate flows **p. W 11**

**Non rigid bags filters**



**FTF** Non rigid bags filters **p. W 12**



# MP3

advanced air diffusion

**Index**  
filtering 

**filtering**

**Index**



Version 09/00

# MP3



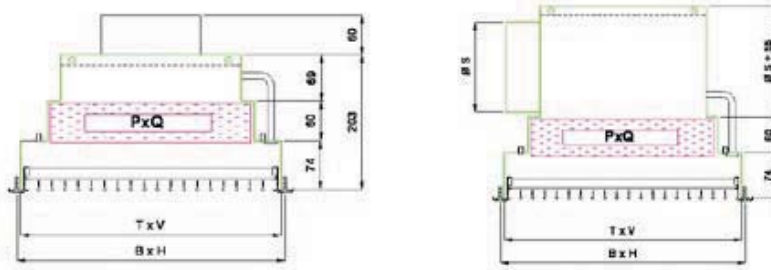
**Overview**

The PP30F Series units are absolute filter-holder ending units with supply deflection grille. They are employed in air-spreading for white rooms, hospital centres, pharmaceutical laboratories, food industries and generally for controlled contamination rooms.

**Technical data**

- Standard dimensions from 400x400 up 1.300x700 mm
- White RAL 9010 painted steel filter-holder plenum with posterior connection
- FA Series absolute filter
- Anodized aluminium double deflection grille
- Superficial white RAL 9010 or other colors on demand
- Wall assemblage

**Dimensions**



Model	B [mm]	H [mm]	T [mm]	V [mm]	P [mm]	Q [mm]	Ø S [mm]
PP30/31F 400400	400	400	395	395	305	305	n° 1 Ø 160
PP30/31F 550400	550	400	545	395	457	305	n° 1 Ø 200
PP30/31F 700400	700	400	695	395	610	305	n° 1 Ø 200
PP30/31F 700700	700	700	695	695	610	610	n° 1 Ø 200
PP30/31F 1000700	1000	700	995	695	915	610	n° 1 Ø 300
PP30/31F 1300700	1300	700	1295	695	1200	610	n° 2 Ø 250

**Quick selection**

Model	Air-flow rate [m³/h]	Starting & ending pressure drop Δp <sub>s</sub> [Pa]
PP30/31F 400400	[150]	[65-600]
PP30/31F 550400	[225]	[65-600]
PP30/31F 700400	[300]	[65-600]
PP30/31F 700700	[600]	[65-600]
PP30/31F 1000700	[900]	[65-600]
PP30/31F 1300700	[1.200]	[65-600]

How to order



**Accessories**

UM2V	Aluminium vertical frontal double deflection grille
FA	Absolute filter

Ref. page 95





### Overview

The FY Series units are absolute filter-holder ending units with panel, perforated or multidirectional diffusers. They are used in air-spreading for white rooms, hospital centres, pharmaceutical laboratories, food industries and generally for controlled contamination rooms.

### Technical data

- White RAL 9010 painted steel filter-holder Plenum
- Circular sideway standard Plenum connection
- To the top and/or rectangular Plenum connection
- FA Series absolute filter
- Ceiling assemblage
- Series variants :
  - Mod. FY...Q1: KQ1 Series unit with panel diffuser
  - Mod. FY...Q2: KQ2 Series unit with panel diffuser
  - Mod. FY...Q3: KQ3 Series unit with panel diffuser
  - Mod. FY...KF: unit with perforated screen diffuser RAL 9010
  - Mod. FY...N4: KN4 Series unit with multidirectional diffuser

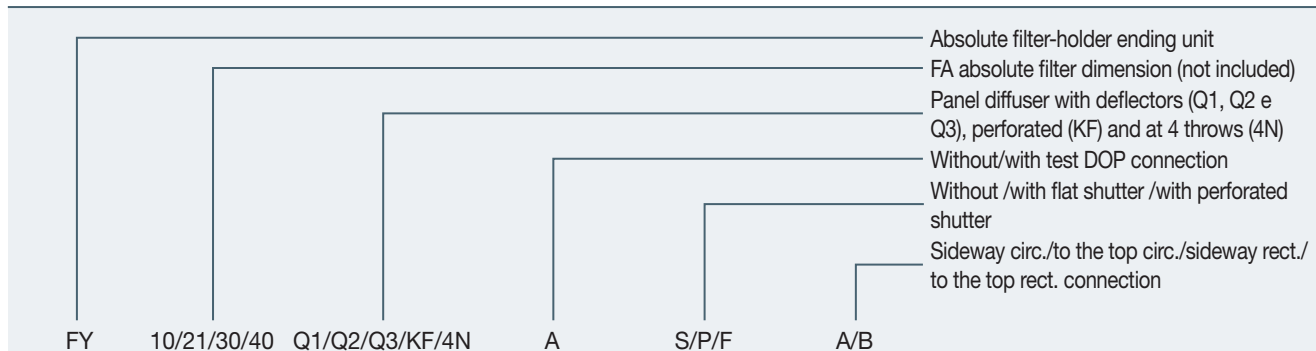
### Dimensions

Model	Ending overall dimensions [mm]	Mod. absolute filter	Filter dimensions [mm]	Connection diameter [mm]
FY10 ?? ???	595 x 595 x 336	FA-7L-10	305x305x68	158
FY10 N4 ???	515 x 515 x 336	FA-7L-10	305x305x68	158
FY21 ?? ???	595 x 595 x 376	FA-7L-21	457x457x68	198
FY21 N4 ???	590 x 590 x 336	FA-7L-21	457x457x68	198
FY30 ?? ???	665 x 665 x 376	FA-7L-30	545x545x68	198
FY40 ?? ???	770 x 770 x 426	FA-7L-40	610x610x68	248

### Quick selection

Model	Air-flow rate [m³/h]	Starting & ending pressure drop $\Delta p_s$ [Pa]
FY10 ?? ???	[150-250]	[65-600]
FY21 ?? ???	[335-550]	[65-600]
FY30 ?? ???	[500-850]	[65-600]
FY40 ?? ???	[600-850]	[65-600]

### How to order



### Accessories

FA	Absolute filter
----	-----------------

Ref. page 95





### Overview

The FR Series items are polyester fiber mats of several thickness. They are used in painting box and in those prefiltering applications for rough dusts lowness. They also are suitable for the filters substitution in the filter-holder aspiration grilles.

### Technical data

- Filtering class G3 for FR10 and FR15, G4 for FR20 and FR25
- Polyester fiber material
- Rolls height 2.000 mm
- Available thicknesses from 10 up to 25 mm
- Maximum temperature +80 °C

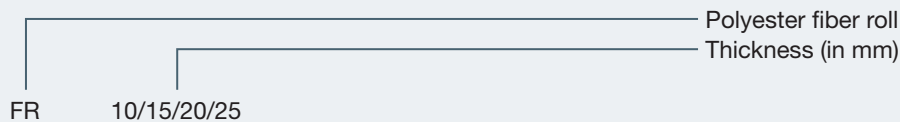
### Dimensions

Model	Thickness [mm]	Overall dim. [m]	Surface [m <sup>2</sup> ]	Ø roll [mm]	Weight conf. [kg]
FR 10	10	2x20	40	50	4
FR 15	15	2x20	40	55	6,2
FR 20	20	2x20	40	60	8,5
FR 25	25	2x20	40	65	11

### Quick selection

Model	Speed [m/s]	Starting & ending pressure drop $\Delta p_s$ [Pa]
FR10	2,5	[32-200]
FR15	2,5	[40-200]
FR20	2,5	[46-200]

### How to order



Ref. page 96





### Overview

The FP Series units are flat filters. They are used for primary filtering in heating, air-conditioning, ventilation installations and in those prefiltering applications for rough dusts lowness. They also are suitable for the filters substitution in the filter-holder aspiration grilles.

### Technical data

- Filtering class G3 for FP24, G4 for FP48
- Polyester fiber material
- 22 e 48 mm thicknesses
- Standard dimensions from 400x400 up to 592x592 mm
- Galvanized steel containment frame with metal net on both sides
- Temperature range from -30 °C up to +80 °C

### Quick selection

Model	Air-flow rate [m³/h]	Starting & ending pressure drop $\Delta p_s$ [Pa]	Model	Air-flow rate [m³/h]	Starting & ending pressure drop $\Delta p_s$ [Pa]
FP22 287x592	[310-1530]	[20-60]	FP48 287x592	[310-1530]	[30-73]
FP22 400x400	[290-1440]	[20-60]	FP48 400x400	[290-1440]	[30-73]
FP22 400x500	[360-1800]	[20-60]	FP48 400x500	[360-1800]	[30-73]
FP22 400x625	[450-2250]	[20-60]	FP48 400x625	[450-2250]	[30-73]
FP22 500x500	[450-2250]	[20-60]	FP48 500x500	[450-2250]	[30-73]
FP22 500x625	[565-2815]	[20-60]	FP48 500x625	[565-2815]	[30-73]
FP22 592x592	[635-3155]	[20-60]	FP48 592x592	[635-3155]	[30-73]

### How to order





### Overview

The FO Series units are wavy filters. They are used for primary filtering in heating, air-conditioning, ventilation installations and in those prefiltering applications for rough dusts lowness. They also are suitable for the filters substitution in the filter-holder aspiration grilles.

### Technical data

- Filtering class G4
- Polyester fiber material
- 48 and 98 mm thicknesses
- Standard dimensions from 400x400 up to 592x592 mm
- Galvanized steel containment loom with metal net on both side
- Temperature range -30 °C - +80 °C

### Quick selection

Model	Air-flow rate [m³/h]	Starting & ending pressure drop $\Delta p_s$ [Pa]
FO48 287x592	[600-2875]	[35-260]
FO48 400x400	[550-2700]	[35-260]
FO48 400x500	[675-3375]	[35-260]
FO48 400x592	[850-4225]	[35-260]
FO48 400x625	[850-4225]	[35-260]
FO48 492x592	[1075-5300]	[35-260]
FO48 500x500	[850-4225]	[35-260]
FO48 500x625	[1075-5300]	[35-260]
FO48 592x592	[1225-5950]	[35-260]

Model	Air-flow rate [m³/h]	Starting & ending pressure drop $\Delta p_s$ [Pa]
FO98 287x592	[600-2875]	[35-260]
FO98 400x400	[550-2700]	[35-260]
FO98 400x500	[675-3375]	[35-260]
FO98 400x625	[850-4225]	[35-260]
FO98 500x500	[850-4225]	[35-260]
FO98 500x625	[1075-5300]	[35-260]
FO98 592x592	[1225-5950]	[35-260]

### How to order



Ref. page 96





### Overview

The FPI Series units are stainless steel flat filters. They are used for primary filtering in aspiration installations in the civil and industrial food-supply area and anyway in all those prefiltering applications for fats lowness in the aspiration copes.

### Technical data

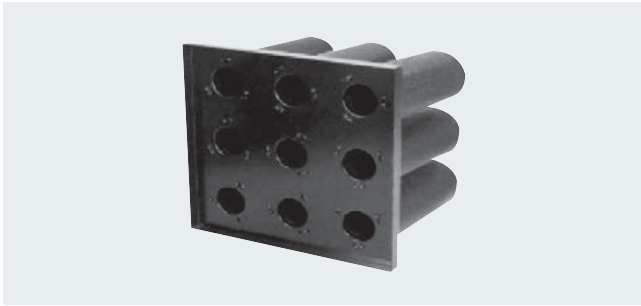
- Filtering class G2
- Changing density microstretched net layers material of AISI 304
- 12,5 e 22 mm thicknesses
- Standard dimensions from 400x400 up to 500x625 mm
- Galvanized steel containment frame with metal net on both sides
- Maximum temperature +200 °C

### Quick selection

Model	Air-flow rate [m³/h]	Starting & ending pressure drop $\Delta p_s$ [Pa]	Model	Air-flow rate [m³/h]	Starting & ending pressure drop $\Delta p_s$ [Pa]
FPI12 400x400	[290-1150]	[12-40]	FPI22 400x400	[290-1150]	[15-46]
FPI12 400x500	[360-1440]	[12-40]	FPI22 400x500	[360-1440]	[15-46]
FPI12 400x625	[450-1800]	[12-40]	FPI22 400x625	[450-1800]	[15-46]
FPI12 500x500	[450-1800]	[12-40]	FPI22 500x500	[450-1800]	[15-46]
FPI12 500x625	[565-2250]	[12-40]	FPI22 500x625	[565-2250]	[15-46]

### How to order





### Overview

The FC Series units are active coals filters. They are used for filtering to stop the smelling substances in gaseous state, as to lower their concentration under the threshold of smell sensitivity, or in case of pollution gasses, to reduce their concentration to commonly admitted values.

### Technical data

- Filtering class G2
- Active coals scales material
- Steel cartridges and black painted microstretched net
- 400 mm filtering item height
- Standard dimensions 305x610 mm (5 cartridges) and 610x610 mm (9 cartridges)
- Maximum temperature +50 °C

### Dimensions

Model	Dimensions [mm]	Weigh [kg]
FC-6130	305x610x430	16
FC-6161	610x610x430	28
FC 16	Ø160x400	
FC-CS25		25

### Quick selection

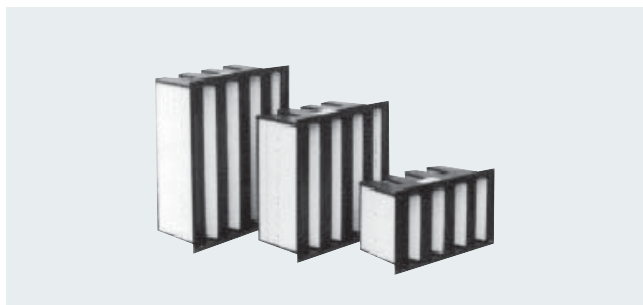
Model	Air-flow rate [m³/h]	Starting & ending pressure drop $\Delta p_s$ [Pa]
FC-6130	1500	150
FC-6161	3000	150

### How to order

Model	Description
FC-6130	Filter-holders plate, of 5 cartridges
FC-6161	Filter-holders plate, of 9 cartridges
FC 16	Active coals cartridges
FC-CS25	25 kg bag standard active coals

Ref. pag. 96





### Overview

The FTR Series units are rigid bag filters. They are used for micro dusts filtering in the air-treatment installations for dwelling houses, general laboratories, hospitals, telephone and data processing stations. They also are used as absolute filters prefilterings.

### Technical data

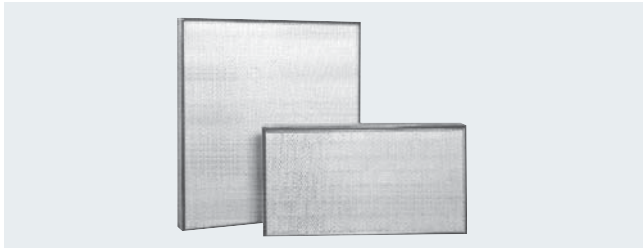
- Filtering class F6 (FT65R), F7 (FT85R) and F8 (FT95R)
- Fireproof water-repellent glass microfibre material
- 292 mm thickness
- Standard dimensions 288x593, 491x593 e 593x593 mm
- Plastic containment frame
- Maximum temperature +80 °C

### Quick selection

Model	Air flow rate [m <sup>3</sup> /h]	Area [m <sup>2</sup> ]	Starting & ending pressure drop Δps [Pa]	Efficiency %
FT65R 288x593	2250	8	[135-600]	65
FT65R 491x593	4100	14	[135-600]	65
FT65R 593x593	5000	17	[135-600]	65
FT85R 288x593	2250	9	[140-600]	85
FT85R 491x593	4100	15	[140-600]	85
FT85R 593x593	5000	19	[140-600]	85
FT95R 288x593	2250	9	[160-600]	95
FT95R 491x593	4100	15	[160-600]	95
FT95R 593x593	5000	19	[160-600]	95
FTR9-07-292-02	2125	7	[120-600]	95
FTR9-09-292-02	2125	9	[120-600]	95
FTR9-14-292-05	4250	14	[120-600]	95
FTR9-18-292-05	4250	18	[120-600]	95

Ref. pag. 96





**Overview**

The FA Series units are absolute filters. They are used in hospital centres, white rooms, pharmaceutical laboratories and food industries.

**Technical data**

- Filtering classes H10, H13, H14 e U15
- Fireproof water-repellent glass microfibre filter material
- Extrusive anodized aluminium frame
- Both side painted steel protective screen
- PU one piece gasket
- Polyurethane bicomponent sealing
- 68 mm filtering item height
- Standard dimensions from 305x305 mm up to 915x1.829 mm
- Maximum using temperature +80 °C

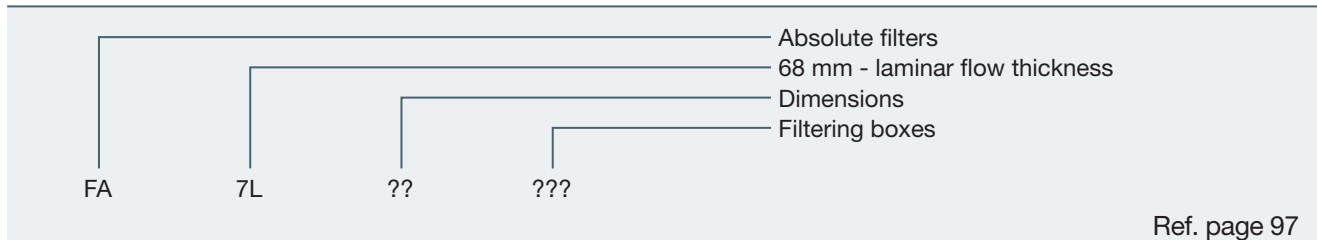
**Dimensions**

Model	Dimensions [mm]	Model	Dimensions [mm]	Model	Dimensions [mm]
FA-7L-10???	305 x 305 x 68	FA-7L-41???	610 x 915 x 68	FA-7L-54???	762 x 1219 x 68
FA-7L-11???	305 x 610 x 68	FA-7L-42???	610 x 1219 x 68	FA-7L-55???	762 x 1524 x 68
FA-7L-20???	457 x 305 x 68	FA-7L-43???	610 x 1524 x 68	FA-7L-56???	762 x 1829 x 68
FA-7L-21???	457 x 457 x 68	FA-7L-44???	610 x 1829 x 68	FA-7L-60???	914 x 305 x 68
FA-7L-22???	457 x 610 x 68	FA-7L-50???	762 x 305 x 68	FA-7L-61???	914 x 914 x 68
FA-7L-30???	545 x 545 x 68	FA-7L-51???	762 x 610 x 68	FA-7L-62???	914 x 1219 x 68
FA-7L-31???	545 x 1155 x 68	FA-7L-52???	762 x 762 x 68	FA-7L-63???	914 x 1524 x 68
FA-7L-40???	610 x 610 x 68	FA-7L-53???	762 x 914 x 68	FA-7L-64???	914 x 1829 x 68

**Quick selection**

Model	Air-flow rate [m³/h]	Starting & ending pressure drop $\Delta p_s$ [Pa]	Model	Air-flow rate [m³/h]	Starting & ending pressure drop $\Delta p_s$ [Pa]
FA-7L-10???	150	[120-600]	FA-7L-50???	375	[120-600]
FA-7L-11???	300	[120-600]	FA-7L-51???	750	[120-600]
FA-7L-20???	225	[120-600]	FA-7L-52???	950	[120-600]
FA-7L-21???	335	[120-600]	FA-7L-53???	1125	[120-600]
FA-7L-22???	450	[120-600]	FA-7L-54???	1500	[120-600]
FA-7L-30???	500	[120-600]	FA-7L-55???	1875	[120-600]
FA-7L-31???	1000	[120-600]	FA-7L-56???	2250	[120-600]
FA-7L-40???	600	[120-600]	FA-7L-60???	450	[120-600]
FA-7L-41???	900	[120-600]	FA-7L-61???	1350	[120-600]
FA-7L-42???	1200	[120-600]	FA-7L-62???	1800	[120-600]
FA-7L-43???	1500	[120-600]	FA-7L-63???	2250	[120-600]
FA-7L-44???	1800	[120-600]	FA-7L-64???	2700	[120-600]

How to order





## Overview

FTF series nonrigid bags filter are used for filtering fine dusts in air treatment units and for HVAC plants for buildings, hotels, laboratories, hospitals, call centers, data processing and computer centers. Often they are mounted for prefiltering before absolute filters

## Technical characteristics

- Filter media: made of high efficiency synthetic fiber.
- Frame: made of galvanized steel.
- Operative temperature: + 100 ° c.
- Height filtering elements: 380 - 535 - 636 - 737 mm.

## Quick selection

Model	Filter media	n° of bags	Efficiency	Sizes
FT160F287592535	Synthetic fiber	5	65%	287x592x535
FT160F287592636	Synthetic fiber	5	65%	287x592x636
FT160F287592737	Synthetic fiber	5	65%	287x592x737
FT160F490592535	Synthetic fiber	8	65%	490x592x535
FT160F490592636	Synthetic fiber	8	65%	490x592x636
FT160F490592737	Synthetic fiber	8	65%	490x592x737
FT160F592592535	Synthetic fiber	10	65%	592x592x535
FT160F592592636	Synthetic fiber	10	65%	592x592x636
FT160F592592737	Synthetic fiber	10	65%	592x592x737
FT185F287592535	Synthetic fiber	5	85%	287x592x535
FT185F287592636	Synthetic fiber	5	85%	287x592x636
FT185F287592737	Synthetic fiber	5	85%	287x592x737
FT185F490592535	Synthetic fiber	8	85%	490x592x535
FT185F490592636	Synthetic fiber	8	85%	490x592x636
FT185F490592737	Synthetic fiber	8	85%	490x592x737
FT185F592592535	Synthetic fiber	10	85%	592x592x535
FT185F592592636	Synthetic fiber	10	85%	592x592x636
FT185F592592737	Synthetic fiber	10	85%	592x592x737
FT195F287592535	Synthetic fiber	5	95%	287x592x535
FT195F287592636	Synthetic fiber	5	95%	287x592x636
FT195F287592737	Synthetic fiber	5	95%	287x592x737
FT195F490592535	Synthetic fiber	8	95%	490x592x535
FT195F490592636	Synthetic fiber	8	95%	490x592x636
FT195F490592737	Synthetic fiber	8	95%	490x592x737
FT195F592592535	Synthetic fiber	10	95%	592x592x535
FT195F592592636	Synthetic fiber	10	95%	592x592x636
FT195F592592737	Synthetic fiber	10	95%	592x592x737



Model	Filter media	n° of bags	Efficiency	Sizes
FT4F287592360	Synthetic fiber	3	45%	287x592x360
FT4F287592500	Synthetic fiber	3	45%	287x592x500
FT4F287592600	Synthetic fiber	3	45%	287x592x620
FT4F490592360	Synthetic fiber	5	45%	490x592x360
FT4F490592500	Synthetic fiber	5	45%	490x592x500
FT4F490592600	Synthetic fiber	5	45%	490x592x620
FT4F592592360	Synthetic fiber	6	45%	592x592x360
FT4F592592500	Synthetic fiber	6	45%	592x592x500
FT4F592592600	Synthetic fiber	6	45%	592x592x620
FT5F287592360	Synthetic fiber	3	55%	287x592x360
FT5F287592500	Synthetic fiber	3	55%	287x592x500
FT5F287592600	Synthetic fiber	3	55%	287x592x620
FT5F490592360	Synthetic fiber	5	55%	490x592x360
FT5F490592500	Synthetic fiber	5	55%	490x592x500
FT5F490592600	Synthetic fiber	5	55%	490x592x620
FT5F592592360	Synthetic fiber	6	55%	592x592x360
FT5F592592500	Synthetic fiber	6	55%	592x592x500
FT5F592592600	Synthetic fiber	6	55%	592x592x620
FT860F287592535	Synthetic fiber	4	65%	287x592x535
FT860F287592636	Synthetic fiber	4	65%	287x592x636
FT860F287592737	Synthetic fiber	4	65%	287x592x737
FT860F490592535	Synthetic fiber	6	65%	490x592x535
FT860F490592636	Synthetic fiber	6	65%	490x592x636
FT860F490592737	Synthetic fiber	6	65%	490x592x737
FT860F592592535	Synthetic fiber	8	65%	592x592x535
FT860F592592636	Synthetic fiber	8	65%	592x592x636
FT860F592592737	Synthetic fiber	8	65%	592x592x737
FT885F287592535	Synthetic fiber	4	85%	287x592x535
FT885F287592636	Synthetic fiber	4	85%	287x592x636
FT885F287592737	Synthetic fiber	4	85%	287x592x737
FT885F490592535	Synthetic fiber	6	85%	490x592x535
FT885F490592636	Synthetic fiber	6	85%	490x592x636
FT885F490592737	Synthetic fiber	6	85%	490x592x737
FT885F592592380	Synthetic fiber	8	85%	592x592x380
FT885F592592535	Synthetic fiber	8	85%	592x592x535
FT885F592592636	Synthetic fiber	8	85%	592x592x636
FT885F592592737	Synthetic fiber	8	85%	592x592x737
FT895F287592535	Synthetic fiber	4	95%	287x592x535
FT895F287592636	Synthetic fiber	4	95%	287x592x636
FT895F287592737	Synthetic fiber	4	95%	287x592x737
FT895F490592535	Synthetic fiber	6	95%	490x592x535
FT895F490592636	Synthetic fiber	6	95%	490x592x636
FT895F490592737	Synthetic fiber	6	95%	490x592x737
FT895F592592535	Synthetic fiber	8	95%	592x592x535
FT895F592592636	Synthetic fiber	8	95%	592x592x636
FT895F592592737	Synthetic fiber	8	95%	592x592x737



# MP3

advanced air diffusion

Index  
filtering

filtering

Index



Version 09/00

W 14

# MP3